

The NKInformer



A newsletter of the Nathan S. Kline Institute for Psychiatric Research

Donald C. Goff, MD, Director
Antonio Convit, MD, Deputy Director
Thomas Cunningham, MBA, Deputy Director, Institute Administration

August – October 2023

Stuart Moss, MLS, Editor

The OMH Human Research Protection Program

By Alysse Woods, IRB Director

HRPP Mission Statement

The mission of the Human Research Protection Program (HRPP) is to promote the welfare and rights of human research participants, to facilitate excellence in the conduct of all human research activities regardless of regulatory risk, and to provide timely and high-quality IRB review, monitoring of ongoing human studies, and ongoing education and training of investigators and HRPP staff. The HRPP assists the New York State Psychiatric Institute (NYSPI), the Nathan Kline Institute (NKI), the Research Foundation for Mental Hygiene (RFMH), and the New York State Office of Mental Health (OMH) in meeting their regulatory and ethical obligations pertaining to human research participants, and routinely collaborates with other institutional offices.

HRPP Overview

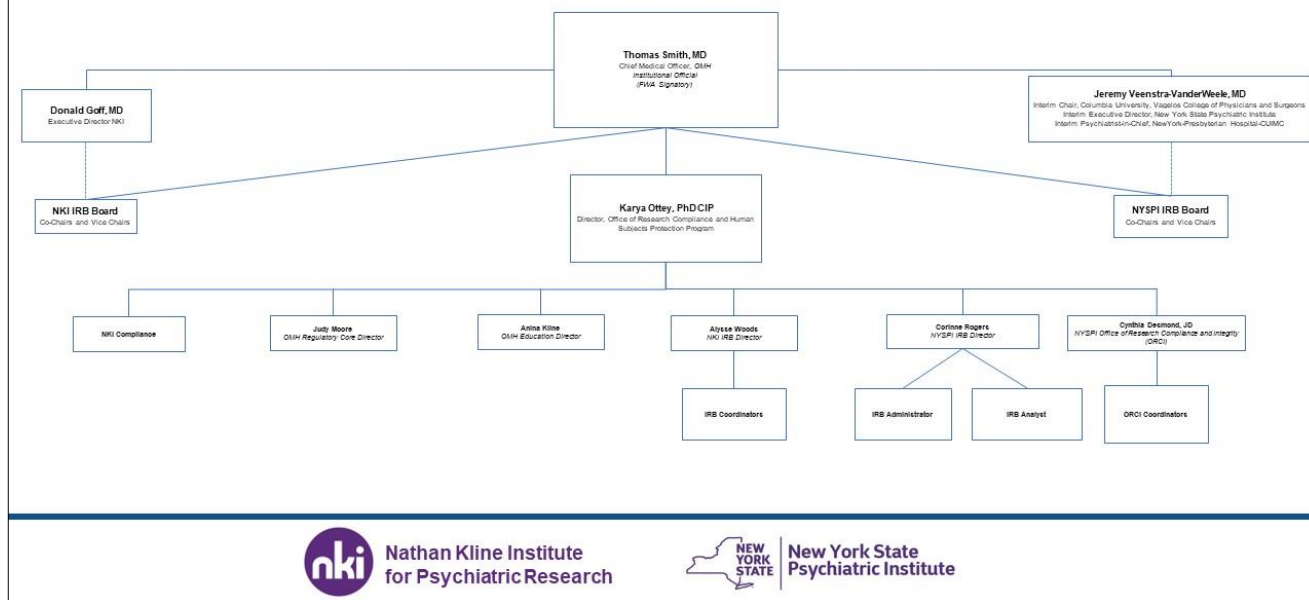
Our newly restructured Human Research Protection Program (HRPP) is a fully integrated HRPP for

psychiatric research conducted under the Office of Mental Health in New York State. This program encompasses the Institutional Review Boards (IRBs) and Compliance programs at both the Nathan Kline Institute and the New York State Psychiatric Institute. The HRPP is responsible for the oversight, administrative support, and educational training to ensure that all OMH research complies with federal, state, and institutional regulations, with a focus on protecting human participants in research. The HRPP is overseen by the United States Office of Human Research Protection (OHRP) and ensures our organization's commitment to and fulfillment of responsibilities to the Federalwide Assurance (FWA).

This Program was restructured with the intent to streamline policy and procedures across all institutions under OMH, to advance the core purpose of protection of human subjects, and to better serve the research community.

The graphic on the following page depicts the organization of the OMH HRPP.

OMH Organizational Chart Human Research Protections Program



HRPP New Roles

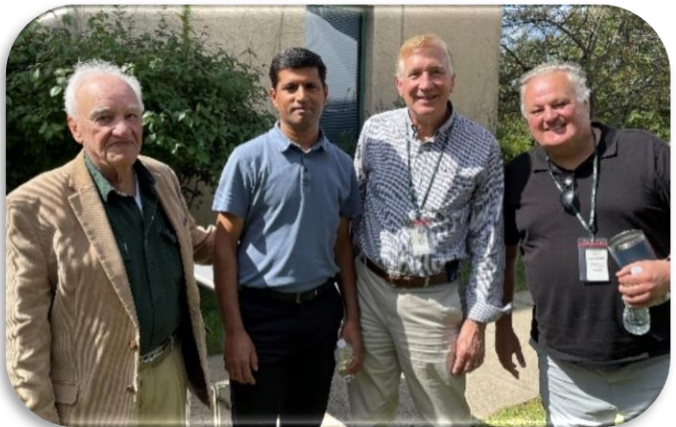
There have been two new roles added to the OMH HRPP: Research Education Director (**Anina Klein, JD, MSW, CCRA**) and Regulatory Core Director (**Judy A. Moore, MPH**).

The Research Education Director directly supports the HRPP Director and provides/oversees all research education to the entire research community under OMH with specific focus on human subjects research protection. Additionally, this Director will provide all education for both the NKI and NYSPI Institutional Review Board members. The Regulatory Core Director will act as the primary liaison between OMH and all outside institutions for Reliance submissions, with oversight of all legal and institutional requirements related to the agreements required for this process. This Director is also responsible for review of submissions and grant materials for confirmation of internal consistency.

BBQ 2023

NKI's **Community Building Committee** organized another successful end-of-summer barbecue on September 19th. Attendees were rewarded with lots of tasty food, blue skies, and yard games. Thanks to the CBC members – Melissa Alldred, Pam Butler, Alex Franco, Renee Hartig, Ying Jiang, Amanda Labuza, Annette Moreno, Brian Russ, Rob Sears, Emily Stern, Catia Teixeira, and Sharifa Williams – for hosting this great event! (more photos on the next page)





GRANTS RECEIVED



National Institute on Alcohol Abuse and Alcoholism

Dr. Basavaraj Balapal (Dementia Research) received a five-year R01 for the grant titled "[CB1-mediated signaling in developmental ethanol effects](#)." He will be collaborating with Drs. Mariko Saito and Christopher Goulbourne. Dr. Balapal notes that this proposal seeks to elucidate the intricate mechanisms responsible for specific synaptic dysfunction in the prefrontal cortex and hippocampus, collectively contributing to behavioral deficits. These deficits are believed to arise from CB1 activity and histone methylation-mediated transcriptional dysregulation due to postnatal alcohol exposure, subsequently giving rise to irregularities in synaptic gene expression.



International
OCD
Foundation

Dr. Goi Khia Eng (Clinical Research; [Psychiatric NeuroCognition Laboratory](#)) received a 2023 IOCDF Michael A. Jenike Young Investigator Award for one year for the project titled "[Transcranial magnetic stimulation effects on urge suppression in obsessive-compulsive disorder using individualized targeting of the postcentral gyrus: A proof-of-concept investigation](#)."



National Institute on Aging

Dr. Stephen Ginsberg (Dementia Research), in collaboration with Dr. Gabriela Chiosis at Memorial Sloan Kettering Cancer Center, received a five-year R01, to continue the previously funded R56 titled "[Selective interactome vulnerability across the Alzheimer's disease spectrum](#)."



National Institute of Mental Health

Dr. Brian Russ ([Translational Neuroscience Laboratories](#); C-BIN), in collaboration with Drs. Peter Rudebeck and Helen S. Mayberg at Icahn School of Medicine at Mt. Sinai, received a five-year R01 for the grant titled "[Establishing the anatomical and functional mechanisms of white matter deep brain stimulation](#)."



National Institute of Neurological Disorders and Stroke

Dr. Charlie Schroeder (PI), Sam Neymotin, Yoshi Kajikawa, Salva Dura-Bernal, and Brian Russ ([Translational Neuroscience Laboratories](#); C-BIN), in collaboration with Drs. John Seymour and John Mosher at UTHealth Houston, received a three-year RF1 for the grant titled, "[Neural recording and simulation tools to address the mesoscale gap](#)."

KUDOS



Mark Klinger, DVM, NKI's longtime veterinarian, has received the Lifetime Achievement Award from the Metro NY Branch of the American Association for Laboratory Animal Science (MNYBAALAS). This award is presented to an MNYBAALAS member of 25 or more consecutive years, who has, for at least 5 of those years, served as an officer/council or committee member.

In their endorsement of his nomination, Dr. Klinger's former colleagues at NYU attested to his many contributions as a mentor, leader, and advocate. "Mark is one of the most generous, committed, and passionate people we know. He is admired by his staff, well respected by researchers, and held in high regard by the laboratory animal science community."

FROM AROUND THE INSTITUTE



Dr. Gabriel Stephens graduated from Williams College in 2015, earning a B.A. with Honors in Biology with a Concentration in Neuroscience. At Williams, Gabe performed and published independent research into dopaminergic mechanisms that

control sequenced motor outputs, including grooming behavior in *Drosophila* fruit flies and song performance in Zebra finches.

From 2015 to 2023, Gabe completed his Ph.D. in Neuroscience (and brief postdoctoral position) in the lab of Jeannie Chin at Baylor College of Medicine. In the Chin lab, Gabe investigated seizure-induced mechanisms that can maintain neuroprotection (but also impair memory) over the course of chronic recurrent seizure activity in models of Alzheimer's disease (AD) and temporal lobe epilepsy (TLE). He found that Δ FosB, a

transcription factor that accumulates over the course of recurrent epileptic or hyperexcitable conditions, is necessary to restrict seizure activity and maintain neuroprotection in the dentate gyrus of the J20 mouse model of AD. He has also identified numerous Δ FosB target gene pathways that together may limit hippocampal excitability and prevent cell death across conditions with chronic recurrent seizure activity.

Gabe joined the Scharfman lab in August 2023 and is investigating roles of the p75 neurotrophin receptor in driving the early-stage hyperexcitability and late-stage neurodegeneration of cholinergic neurons of the medial septum in AD. He is also investigating how hilar mossy cells that survive into the chronic phase of recurrent seizures (after initial chemoconvulsant-induced status epilepticus) may adapt and help to restrict further seizure activity. His work is supported in part by the 2023-2024 NYU Langone Alzheimer's Disease Research Center T32-Funded Postdoctoral Program for Research Training in Alzheimer's Disease and Related Neurodegenerative Disorders.



NKI was well represented at the [NAMI Rockland Annual 5K Run/Walk for Wellness](#) held on September 10th at Rockland Lake State Park. NKI was a sponsor of the event, and **Annie Barczak**, **Peter Byrons**, **Nicholas Caputo**, and **Justyn Mikulewicz** all participated as part of Team NKI. Justyn and Peter both placed first in their respective age groups.



Annie Barczak and Peter Byrons



Justyn Mikulewicz and Peter Byrons approaching the finish line



On September 7th, the [Center for Research on Cultural & Structural Equity \(CCASE\)](#) held its first “REAL Talk on Equity”. Invited guest Natalie Crawford, PhD, from Emory University gave a brief presentation and then sat down with **Dr. Crystal Lewis** (Director of the Division of Social Solutions & Services Research) for an informal discussion in NKI’s Miki Kohn Conference Room.



Drs. Natalie Crawford and Crystal Lewis



American Foundation for Suicide Prevention

The findings from **Dr. Matthew Hoptman’s** American Foundation for Suicide Prevention grant are [posted on the AFSP website](#).



Dr. Hoptman (Clinical Research) also contributed to research that is featured on the website of the Brain & Behavior Research Foundation: [“Two Forms of Non-Drug Therapy Helped Reduce Impulsive Aggression in Schizophrenia”](#).

PUBLICATIONS OF NOTE

ScienceAdvances

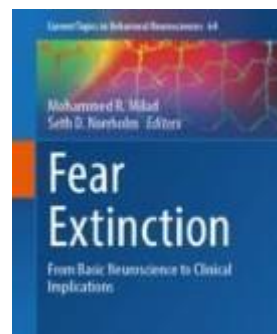
The latest publication from **Ralph Nixon's Lab** (Center for Dementia Research) appears in *Science Advances*. **Eunju Im** is the first author.

Im E, Jiang Y, Stavrides PH, Darji S, Erdjument-Bromage H, Neubert TA, Choi JY, Wegiel J, Lee JH, Nixon RA. [Lysosomal dysfunction in Down syndrome and Alzheimer mouse models is caused by v-ATPase inhibition by Tyr⁶⁸²-phosphorylated APP βCTF](#). *Sci Adv*. 2023 Jul 28; 9(30):eadg1925. PMID: 37494443.



Salvador Dura-Bernal (corresponding author) and **Samuel Neymotin** (Biomedical Imaging & Neuromodulation) are coauthors of this open access paper in *Cell Reports*.

Dura-Bernal S, Neymotin SA, Suter BA, Dacre J, Moreira JVS, Urdapilleta E, Schiemann J, Duguid I, Shepherd GMG, Lytton WW. [Multiscale model of primary motor cortex circuits predicts in vivo cell-type-specific, behavioral state-dependent dynamics](#). *Cell Rep*. 2023 Jun 8; 42(6):112574. PMID: 37300831.



Christopher Cain (Emotional Brain Institute) recently published a chapter in the *Current Topics in Behavioral Neurosciences* volume on "Fear Extinction".

Cain CK. [Beyond Fear, Extinction, and Freezing: Strategies for Improving the Translational Value of Animal Conditioning Research](#). *Curr Top Behav Neurosci*. 2023 Aug 3. PMID: 37532965.



This open access mini review by **Carla Nasca** (Dementia Research) and colleagues at NYU and Rockefeller University appears in *Frontiers in Molecular Neuroscience*.

Bigio B, Sagi Y, Barnhill O, Dobbin J, El Shahawy O, de Angelis P, Nasca C. [Epigenetic embedding of childhood adversity: mitochondrial metabolism and neurobiology of stress-related CNS diseases](#). *Front Mol Neurosci*. 2023 Jul 25; 16:1183184. PMID: 37564785.



Director of Clinical Research **Dan Iosifescu** is a coauthor, with NYU colleagues, of this paper in *Harvard Review of Psychiatry*.

Liebers DT, Ebina W, Iosifescu DV. [Sodium-Glucose Cotransporter-2 Inhibitors in Depression](#). *Harv Rev Psychiatry*. 2023 Jul-Aug 01; 31(4):214-221. PMID: 37437254.



Helen-Maria Lekas (Social Solutions & Services) coauthored this editorial in the open access journal *BMC Public Health*. The article is also an invitation for contributions to a special topic collection in the journal on “Racism as a Public Health Crisis”.

Lekas HM, López-Cevallos D, Routen A. [Exploring the intersections of structural inequities and health disparities: the challenge and opportunity of recognizing racism as a public health crisis](#). *BMC Public Health*. 2023 Jul 25; 23(1):1423. PMID: 37491202.



Michael Milham, Director of the Center for Biomedical Imaging & Neuromodulation, is the corresponding author of this paper appearing in *JAMA Network Open*.

Kass M, Alexander L, Moskowitz K, James N, Salum GA, Leventhal B, Merikangas K, Milham MP. [Parental Preferences for Mental Health Screening of Youths from a Multinational Survey](#). *JAMA Netw Open*. 2023 Jun 1; 6(6):e2318892. PMID: 37338905.

Neuroscience & Biobehavioral Reviews

Lila Davachi (Clinical Research) coauthored this review recently published in *Neuroscience & Biobehavioral Reviews*.

Bein O, Gasser C, Amer T, Maril A, Davachi L. [Predictions transform memories: How expected versus unexpected events are integrated or separated in memory](#). *Neurosci Biobehav Rev*. 2023 Aug 22; 153:105368. PMID: 37619645.



This paper by **Menahem Krakowski**, **Matthew Hoptman** (Clinical Research), and Pal Czobor, was published earlier this year in *Schizophrenia Bulletin Open*.

Krakowski MI, Hoptman MJ, Czobor P. [Neural Correlates of Psychopathic Traits in Schizophrenia: fMRI Study of Response Inhibition in Persistently Violent Patients](#). *Schizophrenia Bulletin Open*. 2023 Jan; 4(1):sgad009.



This article by **Ayana Jordan** (Social Solutions & Services) was published in *The Journal of Clinical Psychiatry*.

Jordan A. [Emerging Perspectives in Addiction Psychiatry](#). *J Clin Psychiatry*. 2023 Aug 9; 84(4):muladx3048sho. PMID: 37555675.

scientific data

This Data Descriptor in the open access journal *Scientific Data* was contributed by **Alexandre Franco** (corresponding author), **Qawi Telesford** (first author), and other members of the Center for Biomedical Imaging & Neuromodulation.

Telesford QK, Gonzalez-Moreira E, Xu T, Tian Y, Colcombe SJ, Cloud J, Russ BE, Falchier A, Nentwich M, Madsen J, Parra LC, Schroeder CE, Milham MP, Franco AR. [An open-access dataset of naturalistic viewing using simultaneous EEG-fMRI](#). *Sci Data*. 2023 Aug 23; 10(1):554. PMID: 37612297.



Renée Hartig (Biomedical Imaging & Neuromodulation) is the first author of this article in the open access journal *Current Research in Neurobiology*. The article is part of a special issue titled “A Global Outlook on Non-Human Primates in Neuroscience Research” of which Dr. Hartig is a co-editor.

Hartig R, Klink PC, Polyakova Z, Dehaqani MA, Bondar I, Merchant H, Vanduffel W, Roe AW, Nambu A, Thirumala M, Shmuel A, Kapoor V, Gothard KM, Evrard HC, Basso MA, Petkov CI, Mitchell AS. [A framework and resource for global collaboration in non-human primate neuroscience](#). *Curr Res Neurobiol*. 2023 Feb 17; 4:100079. PMID: 37397811.

Journal of
Obsessive-Compulsive
and Related Disorders

Emily Stern (Clinical Research) and members of her [Psychiatric NeuroCognition Laboratory](#) published this paper in the *Journal of Obsessive-Compulsive and Related Disorders*.

Bragdon LB, Nota JA, Eng GK, Recchia N, Kravets P, Collins KA, Stern ER. [Failures of Urge Suppression in Obsessive-Compulsive Disorder: Behavioral Modeling Using a Blink Suppression Task](#). *J Obsessive Compuls Relat Disord*. 2023 Jul; 38:100824. PMID: 37521712.

The medRxiv logo consists of the word 'med' in a dark blue serif font, followed by 'Rxiv' in a lighter blue sans-serif font. A decorative horizontal line with a central knot-like motif is positioned above the text.

medRxiv

This *medRxiv* preprint is by first author **Antigona Martinez**, **Daniel Javitt** (both Schizophrenia Research), and colleagues.

Martínez A, Gaspar PA, Bermudez DH, Aburto-Ponce MB, Javitt DC. [Bottom-up and top-down contributions to impaired motion processing in schizophrenia](#). *medRxiv* [Preprint]. 2023 Jul 8:2023.07.07.23292259. PMID: 37461678.

The bioRxiv logo features the word 'bio' in a dark red serif font, followed by 'Rxiv' in a black sans-serif font. A decorative horizontal line with a central knot-like motif is positioned above the text.

bioRxiv

First author **Swati Jain**, corresponding author **Helen Scharfman**, and other members of the Scharfman Lab (Center for Dementia Research) posted this preprint on *bioRxiv*.

Jain S, LaFrancois JJ, Gerencer K, Botterill JJ, Kennedy M, Criscuolo C, Scharfman HE. [Increasing adult neurogenesis protects mice from epilepsy](#). *bioRxiv* [Preprint]. 2023 Jul 10:2023.07.08.548217. PMID: 37502909.

INFO UPDATE

COVID.gov

The U.S. government is again offering free COVID-19 rapid tests via mail. For more information and to request four free tests, go to [COVIDTests.gov](https://www.covidtests.gov).

And when you take an at-home COVID test, note that you can report your test results – anonymously and securely – at [MakeMyTestCount.org](https://www.makemytestcount.org).

The NKI librarian is always available to assist with literature searching, citation searching (Web of Science, Scopus), bibliographic reference management, and the like. When you have any information needs, or questions about available resources, don't hesitate to turn to us.

The library offers a comfortable, quiet space for reading, work, and small meetings. To use the library's Wi-Fi network, ask the library staff for the password.

You can [link to the NKI Library's website](#) from myNKI. The Library site includes quick links to the NYU Health Sciences Library and to the New York State Library, as well as links to NKI's own library resources ([journal finder](#), [online catalog](#), etc.).

DEPARTMENT OF WONDER

PLOS BIOLOGY

For the first time, scientists were able to reconstruct music from the brain activity of people when they listened to it. In the study, neurosurgical patients listened to "Another Brick in the Wall, Part 1" by Pink Floyd, and the researchers used signals from electrodes placed on the patients' brains to try to reconstruct the song from the brain signals. [The study](#) appears in *PLoS Biology* and you can read an NIH post about this research here: "[Scientists translate brain activity into music](#)".

Research like this raises ethical questions about mental privacy and the possible need for protection of "neurorights", as discussed in Nature news items [here](#) and [here](#).

EVENTS AND SEMINARS



The 2023 Walk to End Alzheimer's – Rockland County is on Sunday, October 15th. Members and friends of NKI's GERI Program will be walking, and they welcome you to join them and/or to donate to the cause. For more information, [go to the team page](#).

Center for Biomedical Imaging and Neuromodulation Science Series

Held on Mondays at 11 am via Zoom

<https://childmind.zoom.us/j/87444738909?pwd=Tel4TVduMVp1WS9QV0VWUkVKU2xvQT09&from=addon>

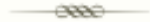
Meeting ID: 874 4473 8909
Passcode: 987767

Maëva Gacoin, PhD

McGill University

Behavioral and pharmacological enhancement of plasticity in the adult macaque visual cortex

October 30th



Center for Dementia Research Neuroscience Seminar Series

Held on Thursdays at 10 am in the Miki Kohn conference room.

Gabriela Chiosis, PhD

Memorial Sloan Kettering Cancer Center

November 2nd

Moses Chao, PhD

New York University

December 14th

Grace Stutzmann, PhD

Rosalind Franklin University

December 21st



2023 INTERNATIONAL MENTAL HEALTH RESEARCH VIRTUAL & IN PERSON SYMPOSIUM

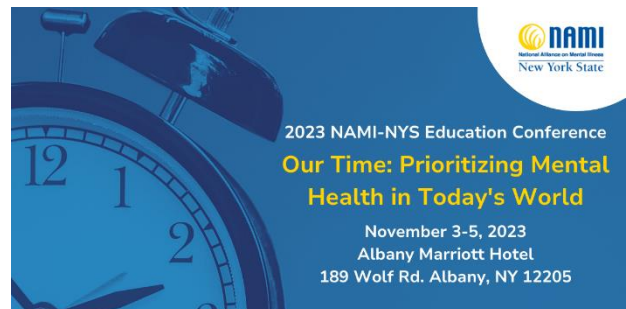
2023 BBRF International Mental Health Research Symposium (Virtual & In-Person)

The Brain & Behavior Research Foundation (BBRF)'s annual research symposium will be held on Friday, October 27th. Join to watch presentations on leading research discoveries across brain and behavior disorders by the Foundation's 2023 Outstanding Achievement Prizewinners.

For more information and to register, go to:

<https://www.bbrfoundation.org/event/international-mental-health-research-symposium>

Friday, October 27th
9:30 am – 12:30 pm



NAMI New York State will hold its annual Education Conference on November 3-5 in Albany. This year's theme is "Our Time: Prioritizing Mental Health in Today's World". For more information about this event and to register, go to the [event page](#).



Statewide Grand Rounds

Applying Best Practices in Opioid Use Disorder & Treatment in OMH Settings

Presenters

Leslie Marino, MD, MPH
Deputy Clinical Director, Pilgrim PC

Peter Przeradzki, DSW, LCSW-R
Program Director, South Richmond Assertive
Community Treatment

Sharat Iyer, MD, MS
Assistant Medical Director, OMH Adult State-
Operated Services

Wednesday, October 18th
1:00 – 2:30 pm

The New York State Office of Mental Health (OMH) regularly hosts an interactive video broadcast covering the latest research, technology, and treatment implementation in the fields of psychiatry and psychology. These programs are recorded, and the archived Statewide Grand Rounds programs can be viewed [on the OMH website](#).

NKI ON THE ROAD



Two NKI investigators presented posters at the [Alzheimer's Association International Conference](#) held in Amsterdam in July.

Pasquale D'Acunzo (Dementia Research) presented a poster titled "[Electrophysiological effects of mitochondria-derived extracellular vesicles: implications for memory dysfunction in neurodegenerative disorders.](#)"

Nunzio Pomara (Geriatric Psychiatry) presented a poster titled "[Sex- or depression-specific relationships with CSF sAPP \$\alpha\$, sAPP \$\beta\$ and their associations with CSF sTREM2 in older adults.](#)"



At the recent [Autumn Conference of the International Society for CNS Clinical Trials and Methodology](#) (ISCTM) held in Barcelona, **Anzalee Khan** (Manhattan Schizophrenia Research Program) gave a presentation on "Biostatistical considerations around the use of traditional or AI based covariates in registrational trials".

Also at the conference, two posters from Modality.AI in collaboration with NKI were presented. These posters were titled: "Differentiating primary and secondary expressive negative symptoms for remote digital trials using a multimodal dialogue platform" and "Towards an Interpretable Index Score for the Assessment of Schizophrenia based on Multimodal Speech and Facial Biomarkers". NKI coauthors were **Anzalee Khan, Benedicto Parker, Theresa Abad, and Jean-Pierre Lindenmayer** (Manhattan Schizophrenia Research Program).



Dr. Mark Klinger gave a presentation at the meeting (11th Annual Veterinarian's Night) of the Metropolitan NY Branch of the American Association for Laboratory Animal Science held on September 14th at the Memorial Sloan Kettering Zuckerman Research Center. Mark's wife, Dr. Ellen Levee, also presented at the meeting.



Drs. Jean-Pierre Lindenmayer and **Anzalee Khan** (Manhattan Schizophrenia Research Program) were Chair and Co-Chair, respectively, of a Symposium on "[Digital Biotyping of Negative Symptoms: Advances and Challenges](#)" at the Schizophrenia International Research Conference held in Toronto in May. A recording of the session can be found on the linked web page.

NKI PUBLICATIONS UPDATE

Below is a list of references that have been added to the NKI publications database since the previous update. The full database contains over 7,200 items dating back to 1995 and can be searched from the [myNKI website](#).

Als TD, Kurki MI, Grove J ... Roussos P, Daly MJ, Mors O, Palotie A, Børglum AD. Depression pathophysiology, risk prediction of recurrence and comorbid psychiatric disorders using genome-wide analyses. *Nat Med.* 2023 Jul;29(7):1832-1844. PMID: 37464041.

Baroni A, Feder MA, Castellanos FX, Li J, Shatkin J. Internet use 101 in college: Do undergraduates want to learn healthier internet use? *Public Health Pract (Oxf).* 2023 Jul 23; 6:100411. PMID: 37576526.

Bein O, Gasser C, Amer T, Maril A, Davachi L. Predictions transform memories: How expected versus unexpected events are integrated or separated in memory. *Neurosci Biobehav Rev.* 2023 Aug 22; 153:105368. PMID: 37619645.

Bigio B, Sagi Y, Barnhill O, Dobbin J, El Shahawy O, de Angelis P, Nasca C. Epigenetic embedding of childhood adversity: mitochondrial metabolism and neurobiology of stress-related CNS diseases. *Front Mol Neurosci.* 2023 Jul 25; 16:1183184. PMID: 37564785.

Borges FS, Protachevicz PR, Souza DLM, Bittencourt CF, Gabrick EC, Bentivoglio LE, Szezech JD, Batista AM, Caldas IL, Dura-Bernal S, Pena RFO. The Role of Potassium and Calcium Currents in the Bistable Firing Transition. *bioRxiv [Preprint].* 2023 Aug 17:2023.08.16.553625. PMID: 37645875.

Borzello M, Ramirez S, Treves A, Lee I, Scharfman H, Stark C, Knierim JJ, Rangel LM. Assessments of dentate gyrus function: discoveries and debates. *Nat Rev Neurosci.* 2023 Aug;24(8):502-517. PMID: 37316588.

Bragdon LB, Nota JA, Eng GK, Recchia N, Kravets P, Collins KA, Stern ER. Failures of Urge Suppression in Obsessive-Compulsive Disorder: Behavioral Modeling Using a Blink Suppression Task. *J Obsessive Compuls Relat Disord.* 2023 Jul; 38:100824. PMID: 37521712.

Bruno D, Jauregi Zinkunegi A, Kollmorgen G, Carboni M, Wild N, Carlsson C, Bendlin B, Okonkwo O, Chin N, Hermann BP, Asthana S, Blennow K, Langhough R, Johnson SC, Pomara N, Zetterberg H, Mueller KD. A comparison of diagnostic performance of word-list and story recall tests for biomarker-determined Alzheimer's disease. *J Clin Exp Neuropsychol.* 2023 Aug 12:1-7. PMID: 37571873.

Cain CK. Beyond Fear, Extinction, and Freezing: Strategies for Improving the Translational Value of Animal Conditioning Research. *Curr Top Behav Neurosci*. 2023 Aug 3. PMID: 37532965.

Cho Y, Tural U, Iosifescu DV. Efficacy of Transcranial Photobiomodulation on Depressive Symptoms: A Meta-Analysis. *Photobiomodul Photomed Laser Surg*. 2023 Aug 31. PMID: 37651208.

Darrow SM, Pizzagalli DA, Smoski M, Mathew SJ, Nurnberger J Jr, Lisanby SH, Iosifescu D, Murrough JW, Yang H, Weiner RD, Sanacora G, Keefe RSE, Song A, Goodman W, Whitton AE, Potter WZ, Krystal AD. Using latent profile analyses to classify subjects with anhedonia based on reward-related measures obtained in the FAST-MAS study. *J Affect Disord*. 2023 Oct 15; 339:584-592. PMID: 37467805.

Dura-Bernal S, Neymotin SA, Suter BA, Dacre J, Moreira JVS, Urdapilleta E, Schiemann J, Duguid I, Shepherd GMG, Lytton WW. Multiscale model of primary motor cortex circuits predicts in vivo cell-type-specific, behavioral state-dependent dynamics. *Cell Rep*. 2023 Jun 8; 42(6):112574. PMID: 37300831.

Entrup P, Brodsky L, Trimble C, Garcia S, Mohamed N, Deaner M, Martell JP, Teater J, Jordan A, Tetrault JM, Hall OT. Years of life lost due to deaths of despair and COVID-19 in the United States in 2020: patterns of excess mortality by gender, race and ethnicity. *Int J Equity Health*. 2023 Aug 23; 22(1):161. PMID: 37612748.

Goff DC, Santacatterina M, Capichioni G, Ando F, Hart K, Convit A, Rusinek H. Levetiracetam effects on hippocampal blood flow and symptoms in medication-free individuals with nonaffective first episode psychosis (letter). *Schizophr Res*. 2023 Aug 30; 260:140-142. PMID: 37657280.

Govani V, Shastry A, Iosifescu D, Govil P, Mayer M, Sobeih T, Choo T, Wall M, Sehatpour P, Kantrowitz J. Augmentation of learning in schizophrenia by D-serine is related to auditory and frontally-generated biomarkers: A randomized, double-

blind, placebo-controlled study. *Res Sq [Preprint]*. 2023 May 19:rs.3.rs-2943290. PMID: 37293030.

Govani V, Shastry AM, Iosifescu DV, Govil P, Mayer MR, Sobeih T, Choo TH, Wall MM, Sehatpour P, Kantrowitz JT. Augmentation of learning in schizophrenia by d-serine and auditory remediation is related to auditory and frontally-generated biomarkers: A randomized, double-blind, placebo-controlled study. *Schizophr Res*. 2023 Sep 8; 260:205-208. PMID: 37690312.

Haeny AM, McCuistian C, Burlew AK, Ruglass LM, Espinosa A, Jordan A, Roundtree C, Lopez J, Morgan-López AA. Integrative data analysis of clinical trials network studies to examine the impact of psychosocial treatments for black people who use cocaine: Study protocol. *Contemp Clin Trials*. 2023 Aug 29:107329. PMID: 37652354.

Hartig R, Klink PC, Polyakova Z, Dehaqani MA, Bondar I, Merchant H, Vanduffel W, Roe AW, Nambu A, Thirumala M, Shmuel A, Kapoor V, Gothard KM, Evrard HC, Basso MA, Petkov CI, Mitchell AS. A framework and resource for global collaboration in non-human primate neuroscience. *Curr Res Neurobiol*. 2023 Feb 17; 4:100079. PMID: 37397811.

Im E, Jiang Y, Stavrides PH, Darji S, Erdjument-Bromage H, Neubert TA, Choi JY, Wegiel J, Lee JH, Nixon RA. Lysosomal dysfunction in Down syndrome and Alzheimer mouse models is caused by v-ATPase inhibition by Tyr⁶⁸²-phosphorylated APP β CTF. *Sci Adv*. 2023 Jul 28; 9(30):eadg1925. PMID: 37494443.

Iosifescu DV, Song X, Gersten MB, Adib A, Cho Y, Collins KM, Yates KF, Hurtado-Puerto AM, McEachern KM, Osorio RS, Cassano P. Protocol Report on the Transcranial Photobiomodulation for Alzheimer's Disease (TRAP-AD) Study. *Healthcare (Basel)*. 2023 Jul 13; 11(14):2017. PMID: 37510458.

Jain S, LaFrancois JJ, Gerencer K, Botterill JJ, Kennedy M, Criscuolo C, Scharfman HE. Increasing adult neurogenesis protects mice from epilepsy. *bioRxiv [Preprint]*. 2023 Jul 10:2023.07.08.548217. PMID: 37502909.

Jordan A. Emerging Perspectives in Addiction Psychiatry. *J Clin Psychiatry*. 2023 Aug 9; 84(4):muladx3048sho. PMID: 37555675.

Kass M, Alexander L, Moskowitz K, James N, Salum GA, Leventhal B, Merikangas K, Milham MP. Parental Preferences for Mental Health Screening of Youths from a Multinational Survey. *JAMA Netw Open*. 2023 Jun 1; 6(6):e2318892. PMID: 37338905.

Kiar G, Clucas J, Feczko E, Goncalves M, Jarecka D, Markiewicz CJ, Halchenko YO, Hermsillo R, Li X, Miranda-Dominguez O, Ghosh S, Poldrack RA, Satterthwaite TD, Milham MP, Fair D. Align with the NMIND consortium for better neuroimaging. *Nat Hum Behav*. 2023 Jul; 7(7):1027-1028. PMID: 37386112.

Kleffman K, Levinson G, Rose IVL, Blumenberg LM, Shadaloey SAA, Dhabaria A, Wong E, Galán-Echevarría F, Karz A, Argibay D, Von Itter R, Floristán A, Baptiste G, Eskow NM, Tranos JA, Chen J, Vega Y Saenz de Miera EC, Call M, Rogers R, Jour G, Wadghiri YZ, Osman I, Li YM, Mathews P, DeMattos RB, Ueberheide B, Ruggles KV, Liddel SA, Schneider RJ, Hernando E. Melanoma- Secreted Amyloid Beta Suppresses Neuroinflammation and Promotes Brain Metastasis. *Cancer Discov*. 2022 May 2; 12(5):1314-1335. PMID: 35262173.

Krakowski MI, Hoptman MJ, Czobor P. Neural Correlates of Psychopathic Traits in Schizophrenia: fMRI Study of Response Inhibition in Persistently Violent Patients. *Schizophrenia Bulletin Open*. 2023 Jan; 4(1):sgad009.

Lekas HM, López-Cevallos D, Routen A. Exploring the intersections of structural inequities and health disparities: the challenge and opportunity of recognizing racism as a public health crisis. *BMC Public Health*. 2023 Jul 25; 23(1):1423. PMID: 37491202.

Liao Y, Coelho S, Chen J, Ades-Aron B, Pang M, Osorio R, Shepherd T, Lui YW, Novikov DS, Fieremans E. Mapping brain microstructure in vivo in health and disease using diffusion MRI. *ArXiv [Preprint]*. 2023 Jul 31:arXiv:2307.16386v1. PMID: 37576119.

Liebers DT, Ebina W, Iosifescu DV. Sodium-Glucose Cotransporter-2 Inhibitors in Depression. *Harv Rev Psychiatry*. 2023 Jul-Aug 01; 31(4):214-221. PMID: 37437254.

Mantell KE, Perera ND, Shirinpour S, Puonti O, Xu T, Zimmermann J, Falchier A, Heilbronner SR, Thielscher A, Opitz A. Anatomical details affect electric field predictions for non-invasive brain stimulation in non-human primates. *Neuroimage*. 2023 Oct 1; 279:120343. PMID: 37619797.

Martínez A, Gaspar PA, Bermudez DH, Aburto-Ponce MB, Javitt DC. Bottom-up and top-down contributions to impaired motion processing in schizophrenia. *medRxiv [Preprint]*. 2023 Jul 8:2023.07.07.23292259. PMID: 37461678.

Martin D, Basodi S, Panta S, Rootes-Murdy K, Prae P, Sarwate AD, Kelly R, Romero J, Baker BT, Gazula H, Bockholt J, Turner JA, Esper NB, Franco AR, Plis S, Calhoun VD. Enhancing collaborative neuroimaging research: introducing COINSTAC Vaults for federated analysis and reproducibility. *Front Neuroinform*. 2023 Jun 19; 17:1207721. PMID: 37404336.

Ma Y, Bendl J, Hartley BJ, Fullard JF, Abdelaal R, Ho SM, Kosoy R, Gochman P, Rapoport J, Hoffman GE, Brennan KJ, Roussos P. Activity-Dependent Transcriptional Program in NGN2+ Neurons Enriched for Genetic Risk for Brain- Related Disorders. *Biol Psychiatry*. 2023 Jul 14:S0006-3223(23)01426-9. PMID: 37454787.

Mei L, Yan R, Yin L, Sullivan RM, Lin D. Antagonistic circuits mediating infanticide and maternal care in female mice. *Nature*. 2023 Jun; 618(7967):1006-1016. PMID: 37286598.

Mulholland B, Goodall-Halliwel I, Wallace R, Chitiz L, Mckeown B, Rastan A, Poerio GL, Leech R, Turnbull A, Klein A, Milham M, Wammes JD, Jefferies E, Smallwood J. Patterns of ongoing thought in the real world. *Conscious Cogn*. 2023 Sep; 114:103530. PMID: 37619452.

Nemani K, Goff DC. Dose Finding for d-Serine Enhancement of Plasticity in Schizophrenia. *Biol Psychiatry*. 2023 Jul 15; 94(2):106-107. PMID: 37380254.

Nierenberg AA, Margolis P, Strakowski S, Trivedi M, Yatham LN; Bipolar Disorder Learning Health Network. A Bipolar Learning Health Network: An innovation whose time has come. *Bipolar Disord*. 2023 May; 25(3):177-180. PMID: 37243451.

Nierenberg A, Lavin P, Javitt DC, Shelton R, Sapko MT, Mathew S, Besthof RE, Javitt JC. NRX-101 (D-cycloserine plus lurasidone) vs. lurasidone for the maintenance of initial stabilization after ketamine in patients with severe bipolar depression with acute suicidal ideation and behavior: a randomized prospective phase 2 trial. *Int J Bipolar Disord*. 2023 Aug 13; 11(1):28. PMID: 37573534.

Parekh A, Kam K, Wickramaratne S, Tolbert TM, Varga A, Osorio R, Andersen M, de Godoy LBM, Palombini LO, Tufik S, Ayappa I, Rapoport DM. Ventilatory Burden as a Measure of Obstructive Sleep Apnea Severity Is Predictive of Cardiovascular and All-Cause Mortality. *Am J Respir Crit Care Med*. 2023 Sep 12. PMID: 37698405.

Paz-Linares D, Gonzalez-Moreira E, Areces-Gonzalez A, Wang Y, Li M, Martinez-Montes E, Bosch-Bayard J, Bringas-Vega ML, Valdes-Sosa M, Valdes-Sosa PA. Identifying oscillatory brain networks with hidden Gaussian graphical spectral models of MEEG. *Sci Rep*. 2023 Jul 15; 13(1):11466. PMID: 37454235.

Polanco-Roman L, Williams SZ, Ortin-Peralta A. Study Preregistration: Does State-level Structural Racism Impact Risk for Suicidal Thoughts and Behaviors Among US Adolescents Across Race and Ethnicity? *J Am Acad Child Adolesc Psychiatry*. 2023 Jul; 62(7):829-830. PMID: 37385715.

Pruvost M, Patzig J, Yattah C, Selcen I, Hernandez M, Park HJ, Moyon S, Liu S, Morioka MS, Shopland L, Al-Dalahmah O, Bendl J, Fullard JF, Roussos P, Goldman J, He Y, Dupree JL, Casaccia P. The stability of the myelinating oligodendrocyte transcriptome is regulated by the nuclear lamina.

Cell Rep. 2023 Aug 29; 42(8):112848. PMID: 37515770.

Qian E, Poojar P, Fung M, Jin Z, Vaughan JT Jr, Shrivastava D, Gultekin D, Fernandes T, Geethanath S. Magnetic resonance fingerprinting based thermometry (MRFT): application to *ex vivo* imaging near DBS leads. *Phys Med Biol*. 2023 Aug 22; 68(17). PMID: 37489867.

Raghavan VS, O'Sullivan J, Bickel S, Mehta AD, Mesgarani N. Distinct neural encoding of glimpsed and masked speech in multitalker situations. *PLoS Biol*. 2023 Jun 6; 21(6):e3002128. PMID: 37279203.

Ravi KS, Nandakumar G, Thomas N, Lim M, Qian E, Jimeno MM, Poojar P, Jin Z, Quarterman P, Srinivasan G, Fung M, Vaughan JT Jr, Geethanath S. Accelerated MRI using intelligent protocolling and subject-specific denoising applied to Alzheimer's disease imaging. *Front Neuroimaging*. 2023 Apr 6; 2:1072759. PMID: 37554641.

Rodina A, Xu C, Digwal CS, Joshi S, Patel Y, Santhaseela AR, Bay S, Merugu S, Alam A, Yan P, Yang C, Roychowdhury T, Panchal P, Shrestha L, Kang Y, Sharma S, Almodovar J, Corben A, Alpaugh ML, Modi S, Guzman ML, Fei T, Taldone T, Ginsberg SD, Erdjument-Bromage H, Neubert TA, Manova-Todorova K, Tsou MB, Young JC, Wang T, Chiosis G. Systems-level analyses of protein-protein interaction network dysfunctions via epichaperomics identify cancer-specific mechanisms of stress adaptation. *Nat Commun*. 2023 Jun 23; 14(1):3742. PMID: 37353488.

Sobreiro MFM, Terroni L, Guajardo VD, Mattos PF, Leite CDC, Amaro E Jr, Tinone G, Iosifescu DV, Fraguas R. The Impact of Post-Stroke Depressive Symptoms on Cognitive Performance in Women and in Men: A 4 Month Prospective Study. *Life (Basel)*. 2023 Jul 13; 13(7):1554. PMID: 37511929.

Tal A, Schechtman E, Caughran B, Paller KA, Davachi L. The reach of reactivation: Effects of consciously-triggered versus unconsciously-triggered reactivation of associative memory. *bioRxiv [Preprint]*. 2023 Jul 28:2023.07.26.546400. PMID: 37546839.

Telesford QK, Gonzalez-Moreira E, Xu T, Tian Y, Colcombe SJ, Cloud J, Russ BE, Falchier A, Nentwich M, Madsen J, Parra LC, Schroeder CE, Milham MP, Franco AR. An open-access dataset of naturalistic viewing using simultaneous EEG-fMRI. *Sci Data*. 2023 Aug 23; 10(1):554. PMID: 37612297.

Wagner E, Siskind D, Falkai P, Howes O, Correll C, Lee J, Honer WG, Kane JM, Fernandez-Egea E, Barnes TRE, Hasan A; TRRIP Working Group. Clozapine Optimization: A Delphi Consensus Guideline from the Treatment Response and Resistance in Psychosis Working Group. *Schizophr Bull*. 2023 Jul 4; 49(4):962-972. PMID: 36943247.

Whitebirch AC, Santoro B, Barnett A, Lisgaras CP, Scharfman HE, Siegelbaum SA. Reduced cholecystokinin-expressing interneuron input contributes to disinhibition of the hippocampal CA2 region in a mouse model of temporal lobe

epilepsy. *J Neurosci*. 2023 Aug 25:JN-RM-2091-22. PMID: 37643861.

Zhao C, Jarecka D, Covitz S, Chen Y, Eickhoff SB, Fair DA, Franco AR, Halchenko YO, Hendrickson TJ, Hoffstaedter F, Houghton A, Kiar G, Macdonald A, Mehta K, Milham MP, Salo T, Hanke M, Ghosh SS, Cieslak M, Satterthwaite TD. A reproducible and generalizable software workflow for analysis of large-scale neuroimaging data collections using BIDS Apps. *bioRxiv [Preprint]*. 2023 Aug 18:2023.08.16.552472. PMID: 37645999.

Zhao K, Xie H, Fonzo GA, Carlisle N, Osorio RS, Zhang Y. Defining Dementia Subtypes Through Neuropsychiatric Symptom-Linked Brain Connectivity Patterns. *bioRxiv [Preprint]*. 2023 Jul 3:2023.07.02.547427. PMID: 37461451.