

# The NKI Informer



*A newsletter of the Nathan S. Kline Institute for Psychiatric Research*

Donald C. Goff, MD, Director  
Thomas Cunningham, MBA, Deputy Director, Institute Administration

November – December 2024

*Stuart Moss, MLS, Editor*

## ***NKI's Clinical Research Professionals***

Congratulations to **Audrey Bauzó-Rosario** and **Rana Sobeih** of the Innovative Clinical Research Solutions (ICRS) department in NKI's Information Sciences Division (ISD) on their recent Clinical Research Associate certification through the Association for Clinical Research Professionals. CCRA® (Certified Clinical Research Associate) is a credential formally recognizing clinical research professionals with experience monitoring and supervising the conduct and progress of clinical trials on behalf of a sponsor. This trusted mark of excellence in clinical research is awarded to clinical researchers who have demonstrated proficiency of specific knowledge and skills by passing the standardized CCRA® Certification Exam. Clinical research professionals with 3,000 hours of verifiable work experience are eligible to sit for the CCRA® Exam.



Audrey celebrated 21 years at NKI this past September. She began her career at NKI as a Clinical Data Manager but added study monitoring to her role in 2006. Prior to her position at NKI, Audrey coordinated clinical research trials and conducted neuropsychological testing

at the Aging and Dementia Division of the Gertrude H. Sergievsky Center, Columbia University Department of Neurology, for three years.

Rana has been with NKI for almost three years. She began volunteering in 2021 and eventually transitioned to a full-time position as a monitor. Rana conducted child, teen, and adult programming for the Charlotte Mecklenburg Library system (North Carolina) before joining the ICRS team. Prior, she had two years of experience training professionals in the healthcare field and six years of experience in training professions.



The Innovative Clinical Research Solutions department at ISD works with investigators at NKI and NYSPI to meet their database, data management, and monitoring needs. The ICRS monitoring team conducts Post Approval Monitoring visits, and many departments conducting clinical research have likely received a visit from Audrey and Rana. The ICRS monitoring team is also available to discuss Good Clinical Practice, Regulatory Binders, CRF creation, and a myriad of other topics with study teams looking for a refresher, onboarding someone new, or curious about ever-changing regulatory guidelines. Feel free to stop by and say hello (or congrats)!

## KUDOS



Again this year, three NKI investigators have been recognized for their high-impact research in the recently released [2024 list of Highly Cited Researchers](#) compiled by Clarivate. This year, [Dan Iosifescu, MD, MSc](#) joins [Michael P. Milham, MD, PhD](#) and [Ralph Nixon, MD, PhD](#), both of whom appeared on the 2023 list.

The Highly Cited Researchers list recognizes the world's most influential researchers of the past decade, demonstrated by the production of multiple highly-cited papers that rank in the top 1% by citations for field and year. This select group includes only 1 in 1,000 of the world's researchers – individuals who have demonstrated significant and broad influence in their fields of research.

## WELCOME NEW INVESTIGATORS AND STAFF

**Nabin Koirala, PhD**, recently began his role at NKI as a part-time Research Scientist in C-BIN's Computational Neuroimaging Laboratories. He is also the director of the Brain Imaging Research Core (BIRC) at UConn. Prior to joining UConn, he was a research faculty member at the Yale School of Medicine, where he continues to maintain an affiliation. He earned his PhD from Johannes Gutenberg University in Germany, and in 2019, he moved to the USA for postdoctoral research at Haskins Laboratories.



Dr. Koirala's research focuses on investigating network-level neural perturbations across the lifespan to understanding disruptions in brain function linked to both neurodevelopmental and neurodegenerative disorders, particularly in relation to speech, language, hearing, and movement disorders. Over the years, he has explored how large-scale network approaches can quantify and analyze these alterations, providing a comprehensive understanding of their impact on brain function. Additionally, he has worked on potential treatment options, with a focus on non-invasive brain stimulation techniques such as Transcranial Magnetic Stimulation (TMS), High-Definition Transcranial Direct Current Stimulation (HD-tDCS), and neurofeedback-based interventions,

all aimed at restoring network integrity and improving behavioral and clinical outcomes.

When he's not engaged in neuroscience, Nabin enjoys spending time with his 2-year-old daughter, listening to music, watching soccer, or hiking.



**David Liebers, MD**, is a psychiatrist and physician-scientist interested in studying therapeutics that improve brain energetics in psychiatric conditions. He has joined the Clinical Research Division as a part-time

researcher, while also working as an OMH psychiatrist. Prior to residency, Dr. Liebers's research spanned genetic determinants of psychiatric diseases and health services delivery; more recently his work has focused on studying the potential therapeutic effects of sodium-glucose cotransporter-2 inhibitors, which induce pharmacological ketosis, in psychiatry. He is a graduate of Harvard Medical School and the NYU Grossman School of Medicine Psychiatry Residency. Originally from Niskayuna, NY, David has an interest in the history of science and medicine, fashion, and spending time outdoors looking at birds.



**Narhari Yedke, PhD**, is a new postdoctoral investigator in Dr. Balopal's lab in the Center for Dementia Research, where he aims to apply his expertise in neuroscience to further the

understanding of Fetal Alcohol Spectrum Disorders (FASD).

Dr. Yedke earned his PhD in Pharmacy from Punjab Technical University, Punjab, India. In 2016, after completing his Bachelor of Pharmacy, he began researching the role of medial habenular interactions in the transition from ethanol reward to dependence in mice. He later completed his Master of Pharmacy while expanding his focus to movement disorders during his doctoral studies.



**Andrea Smith** is the newest addition to NKI's Human Resources Department. She graduated from North Rockland High School and pursued her college degree in the Hudson Valley. Andrea's NYS career started 10 years ago with the Office for

People with Developmental Disabilities Hudson Valley Office where she began working in the Business Office and transitioned over to Human Resources a few years later. For the past 7 years, she has worked in various key roles within Human Resources. She gained extensive knowledge of the NYS Civil Service system and HR operations. Andrea is looking forward to being a part of the HR Team at NKI and continuing to grow and advance in the field.



## GRANTS RECEIVED



Dr. **Vilma Gabbay** (Clinical Research) received an R01 at the University of Miami, with a subcontract to NKI with **Dr. Russell Tobe**, for the project titled "[Neural and Psychiatric Consequences of Cannabis Use in Adolescents.](#)"



Dr. **Russell Tobe** (Director, Clinical Evaluation Center), in collaboration with the University of Miami, received an R01 subcontract for the continuation of the project with **Dr. Vilma Gabbay** titled "[Biobehavioral Predictors of Illness Progression in Adolescent Depression.](#)"

Dr. **Arnaud Falchier** (Translational Neuroscience Laboratories) received an R01 subcontract with his collaborator Dr. Alex Opitz at the University of Minnesota for the project titled "[Validation of Closed-Loop Prefrontal Transcranial Magnetic Stimulation in a Non-Human Primate Model.](#)"



Dr. **Yunglin (Elaine) Gazes** (Biomedical Imaging & Neuromodulation), in collaboration with Dr. Yaakov Stern at Columbia, received an R01 subcontract for the project titled "[Exploring Cognitive Aging Using Reference Ability Neural Networks.](#)"

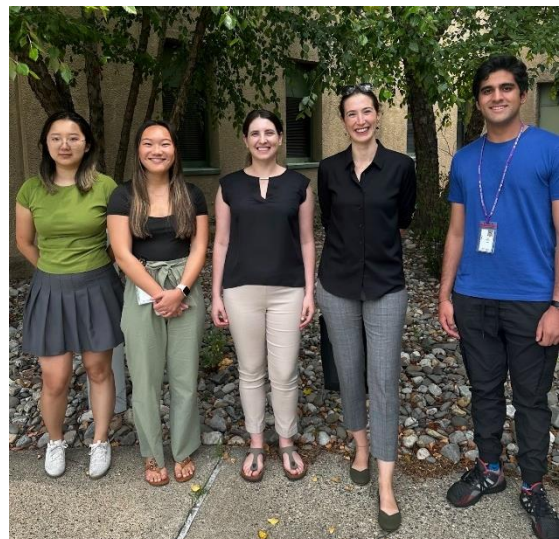
## FROM AROUND THE INSTITUTE

### Summer Scholars Program

*Contributed by Anna MacKay-Brandt, PhD and Renée Hartig, PhD*

The eighth NKI Summer Scholars Program concluded in the first week of August, with several participants continuing as interns during the academic year. These interns attended seminars, learned about ongoing research projects, and contributed to diverse projects both on-site and remotely. NKI investigators were invited to share their research and insights related to their personal academic and career journeys.

Several interns received stipends through their colleges, which supported their participation in the program. Holy Cross University undergraduate, Gabriella Dineen, hopes to take the skills she has learned from the program and apply them to other aspects of her life. Ms. Dineen hopes to focus her studies on neuroscience and mental healthcare.



*NKI Summer Scholars attended a C-BIN Seminar with Dr. Naz Dikecligil (UPenn), who spoke about how distinct odor representations are maintained in the human olfactory cortex. L to R: Yunhan Zhong, Gabriella Dineen, Renée Hartig, Naz Dikecligil, and Raj Salva.*

Yunhan Zhong, a graduate student at NYU, recalls her experience at NKI this summer as an incredible opportunity to grow as a researcher. “My project in Dr. Hartig’s lab not only helped me advance my coding and data analysis skills but also gave me confidence in applying these tools to real-world research problems. The encouragement and expertise from Dr. Hartig and her team made every challenge feel achievable. I left the program with a clearer vision of my career goals and the skills to pursue them.”

NKI’s summer internship program has evolved into a robust and enriching educational experience that continues to be highly valuable for participants. The students return to their studies equipped with a deeper understanding of the research process and greater clarity about potential careers in related fields. The NKI summer internship program is currently fielding applications for next summer. For more information, see [this web page](#).

---

## RETIREMENT



**Kristin Dietz Trautman, LCSW** has been a cornerstone of the NKI Summer Scholars Program, shaping it into the impactful educational experience it is today. She co-founded and directed the program with Dr. Anna MacKay-Brandt. Their initial efforts have grown to provide students and trainees with a wide range of hands-on research opportunities, collaborative mentorship, and a deeper understanding of the scientific process.

Kristin’s commitment to developing a program to foster the next generation of clinicians and scientists has left a lasting impression on countless students who have benefited from her leadership and dedication. The NKI community extends its deepest gratitude to Kristin for her years of service.

As Kristin retires, her legacy will continue through the program’s ongoing success. **Renée Hartig** will take the lead, building on Kristin’s vision to further expand the program’s reach and impact. **Anna Mackay-Brandt** will remain pivotal to the program’s success as consultant.

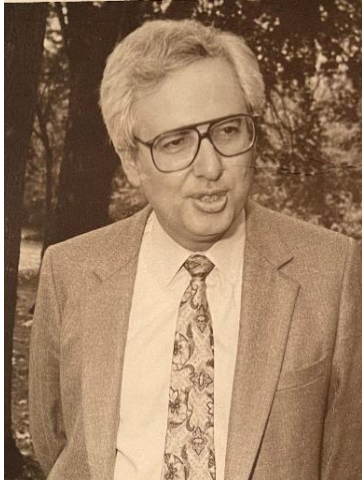


The **Community Building Committee** sponsored another successful food drive for the [People to People](#) Food Pantry in Nanuet. The drive collected 303 pounds of food and \$1,400 in donations!



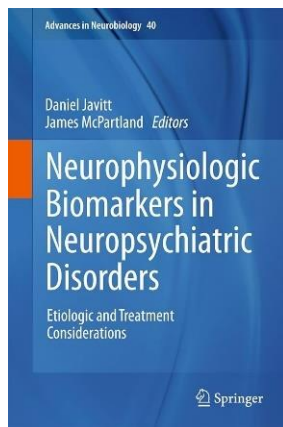
Elizabeth Muenzer and Annette Moreno delivered donations from the Clinical Laboratory staff.

## Remembering Gene Laska (1938 – 2024)



**Eugene Laska, PhD** (pictured circa 1984) came to the Rockland Research Institute in 1963 and continued working here for over 50 years. He founded and directed the Information Sciences Division until his retirement from NKI in 2015. Gene was a pioneer in the introduction of computers to psychiatric research and was a central figure in the history of NKI. He was well known for innovations in statistical methods and for his consultation to NKI investigators and to the FDA. After leaving NKI, he continued his research at NYU Langone where he received an R01 to develop new methods for analyzing clinical trial results. He was a mentor to many and a highly valued collaborator and colleague who will be greatly missed. For more on Gene Laska's career, see the [February 2016 issue](#) of the *Informer*.

## PUBLICATIONS OF NOTE



A new volume in the *Advances in Neurobiology* book series, [Neurophysiologic Biomarkers in Neuropsychiatric Disorders: Etiologic and Treatment Considerations](#), was co-edited by Director of Schizophrenia Research **Dan Javitt** and includes seven chapters by NKI authors. These are listed at the end of the publications update below.



This paper in *PNAS* is by corresponding author **Lila Davachi** (Clinical Research) and colleagues.

Yu W, Zadbood A, Chanales AJH, Davachi L. [Repetition dynamically and rapidly increases cortical, but not hippocampal, offline reactivation](#). Proc Natl Acad Sci U S A. 2024 Oct; 121(40):e2405929121. PMID: 39316058.

Director of Geriatric Psychiatry **Nunzio Pomara** and colleagues including **Ricardo Osorio** (Clinical Research) and **Chelsea Reichert Plaska** (Geriatric Psychiatry) recently contributed this letter also in *PNAS*.

Pomara N, Osorio R, Reichert Plaska C, Imbimbo BP. [Microglia-mediated neuroimmune suppression in posttraumatic stress disorder](#). Proc Natl Acad Sci U S A. 2024 Nov 26; 121(48):e2417472121. PMID: 39536074.

# JAMA Neurology

**Nunzio Pomara** also coauthored this letter published in *JAMA Neurology*.

Pomara N, Imbimbo BP. [Gantenerumab in Dominantly Inherited Alzheimer Disease](#). *JAMA Neurol*. 2024 Nov 11. PMID: 39527042.



## Science Translational Medicine

AAAS

**Stephen Ginsberg** (Dementia Research) is a coauthor of this paper in *Science Translational Medicine*.

Zhu B, Park JM, Coffey SR, Russo A, Hsu IU, Wang J, Su C, Chang R, Lam TT, Gopal PP, Ginsberg SD, Zhao H, Hafler DA, Chandra SS, Zhang L. [Single-cell transcriptomic and proteomic analysis of Parkinson's disease brains](#). *Sci Transl Med*. 2024 Oct 30; 16(771):eabo1997. PMID: 39475571.



## JNeurosci

THE JOURNAL OF NEUROSCIENCE

This review by **Salvador Dura-Bernal** (first author), **Sam Neymotin** (Biomedical Imaging & Neuromodulation), and colleagues was published recently in the *Journal of Neuroscience*.

Dura-Bernal S, Herrera B, Lupascu C, Marsh BM, Gandolfi D, Marasco A, Neymotin S, Romani A, Solinas S, Bazhenov M, Hay E, Migliore M, Reinmann M, Arkhipov A. [Large-Scale Mechanistic Models of Brain Circuits with Biophysically and Morphologically Detailed Neurons](#). *J Neurosci*. 2024 Oct 2; 44(40):e1236242024. PMID: 39358017.

## JOURNAL OF psychiatric research

This new article coauthored by **Menahem Krakowski** (first author) and **Matthew Hoptman** (Clinical Research) was published in the *Journal of Psychiatric Research*.

Krakowski M, Hoptman MJ, Czobor P. [Dysfunctional activation of the default mode network in response inhibition in schizophrenia](#). *J Psychiatr Res*. 2024 Nov 6; 180:411-417. PMID: 39536502.



## Biological Psychiatry: Global Open Science

Senior author **Carla Nasca**, first author **Hope Kronman**, members of the Nasca Lab (Center for Dementia Research), and colleagues published this article recently in *Biological Psychiatry: Global Open Science*.

Kronman H, Singh A, Azam S, Guzman AS, Zelli D, Lau T et al. [Multidimensional Effects of Stress on Neuronal Exosome Levels and Simultaneous Transcriptomic Profiles](#). *Biological Psychiatry Global Open Science* 2024;100401.



## Cerebral CORTEX

**Chase Mackey** (corresponding author), **Noel O'Connell**, **Charles Schroeder**, **Yoshi Kajikawa** (Translational Neuroscience Laboratories), and **Troy Hackett** published this article in *Cerebral Cortex*.

Mackey CA, O'Connell MN, Hackett TA, Schroeder CE, Kajikawa Y. [Laminar organization of visual responses in core and parabelt auditory cortex](#). *Cereb Cortex*. 2024 Sep 3;34(9):bhae373. PMID: 39300609.

Current Treatment Options in

## PSYCHIATRY

This review in *Current Treatment Options in Psychiatry* was contributed by Clinical Research Director **Dan Iosifescu**, **Zamfira Parincu**, **Kari Siu**, **Kate Collins** (Clinical Research), and Naomi Gaggi at NYU.

Gaggi NL, Parincu Z, Siu K, Collins KA, Iosifescu DV. [Modulating the Mitochondria for Mood Disorders: Emerging Evidence for Transcranial Photobiomodulation in Major Depressive Disorder](#). *Current Treatment Options in Psychiatry* 2024; 11:145-62.

## Trends in Neurosciences

**Jordan Hamm** (Emotional Brain Institute) coauthored this Spotlight piece appearing in *Trends in Neurosciences*.

Ross JM, Hamm JP. [An expanding repertoire of circuit mechanisms for visual prediction errors](#). *Trends Neurosci*. 2024 Nov 8. PMID: 39521640.

## Statistics in Medicine

Corresponding author **Sharifa Williams** and **Qixuan Chen** (Social Solutions & Services) recently published this open access article with colleagues in *Statistics in Medicine*.

Williams SZ, Zou J, Liu Y, Si Y, Galea S, Chen Q. [Improving Survey Inference Using Administrative Records Without Releasing Individual-Level Continuous Data](#). *Stat Med*. 2024 Nov 18. PMID: 39557420.



This article by **Helen Scharfman** (Center for Dementia Research) and members of her lab was published in the open access journal *eLife*.

Jain S, LaFrancois JJ, Gerencer K, Botterill JJ, Kennedy M, Criscuolo C, Scharfman HE. [Increasing adult-born neurons protects mice from epilepsy](#). *Elife*. 2024 Oct 24; 12:RP90893. PMID: 39446467.

## nature neuroscience

This new open access article coauthored by **Efrat Levy** and **Pasquale D'Acunzo** (Dementia Research) appears in *Nature Neuroscience*.

Fowler SL, Behr TS, Turkes E, O'Brien DP, Cauhy PM, Rawlinson I, Edmonds M, Foiani MS, Schaler A, Crowley G, Bez S, Ficulie E, Tsefou E, Fischer R, Geary B, Gaur P, Miller C, D'Acunzo P, Levy E, Duff KE, Ryskeldi-Falcon B. [Tau filaments are tethered within brain extracellular vesicles in Alzheimer's disease](#). *Nat Neurosci*. 2024 Nov 21. PMID: 39572740.

## Translational Psychiatry

This open access paper by first author **Jim Clelland**, **Krista Ramiah** (Clinical Research), and colleagues at Columbia University appears in *Translational Psychiatry*.

Clelland JD, Hesson H, Ramiah K, Anderson J, Thengampallil A, Girgis RR, Clelland CL. [The relationship between COMT, proline, and negative symptoms in clinical high risk and recent psychosis onset](#). *Transl Psychiatry*. 2024 Oct 2; 14(1):409. PMID: 39358340.





Senior author **Vilma Gabbay** (Clinical Research) published this paper with **Russell Tobe** (Clinical Evaluation Center Director) and others in *Brain, Behavior, and Immunity: Health*.

Roske C, Nguyen TNB, Schwartz JJ, Erulker A, Nie K, Xie H, Kim-Schulze S, Ely BA, Tobe RH, Mowrey W, Gabbay V. [Immunological correlates of suicidality among adolescents with internalizing symptoms](#). *Brain Behav Immun Health*. 2024 Sep 16; 41:100866. PMID: 39350953.



*biomolecules*

**Balopal Basavarajappa** and **Shivakumar Subbanna** (Center for Dementia Research) have a new comprehensive review in *Biomolecules*, highlighting emerging research on lesser-known phytocannabinoids. The article provides valuable insights into their potential therapeutic applications for a range of major neurological conditions.

Basavarajappa BS, Subbanna S. [Unveiling the Potential of Phytocannabinoids: Exploring Marijuana's Lesser-Known Constituents for Neurological Disorders](#). *Biomolecules*. 2024 Oct 13;14(10):1296. PMID: 39456229.

## INFO UPDATE



✓ **Public Access Compliance**

The NIH is releasing a new [NIH Public Access Policy](#) to make the results of NIH-funded research accessible as quickly as possible. The new Policy will replace the 2008 Public Access Policy and remove the twelve-month embargo period to provide accelerated access to published manuscripts. The new Policy requires Author Accepted Manuscripts accepted for publication in a journal, on or after December 31, 2025 (regardless of when the award was made that resulted in the manuscript), to be submitted to PubMed Central upon acceptance for publication, for public availability without embargo upon the Official Date of Publication. For more information, see [this blog post](#).

The NKI librarian is always available to assist with literature searching, citation searching (Web of Science, Scopus), bibliographic reference management, and the like. When you have any information needs, or questions about available resources, don't hesitate to turn to us.

You can [link to the NKI Library's website](#) from myNKI. The Library site includes quick links to the NYU Health Sciences Library and to the New York State Library, as well as links to NKI's own library resources ([journal finder](#), [online catalog](#), etc.).

## EVENTS & SEMINARS

### Center for Biomedical Imaging and Neuromodulation Science Series

Held on Mondays at 11 am via Zoom

**Eline Mergan**

KU Leuven, Belgium

**TITLE TBA**

January 13<sup>th</sup>

**Florencia Assaneo, PhD**

Universidad Nacional Autónoma de México

**TITLE TBA**

February 10<sup>th</sup>

**Yoko Nomura, PhD**

Queens College and Graduate Center, CUNY

**TITLE TBA**

February 24<sup>th</sup>

The New York State Office of Mental Health (OMH) regularly hosts an interactive video broadcast covering the latest research, technology, and treatment implementation in the fields of psychiatry and psychology. These programs are recorded, and the archived Statewide Grand Rounds programs can be viewed [on the OMH website](#).

## NKI ON THE ROAD



**APHA 2024**

ANNUAL MEETING & EXPO  
Minneapolis | Oct. 27-30

*Rebuilding Trust in Public Health and Science*

**Tine Pahl** (Social Solutions & Research) gave a presentation on “The effects of racism on cumulative stress burden and health” at the American Public Health Association Annual Meeting held recently in Minneapolis.



### Department of Psychiatry Grand Rounds

**Carla Nasca** (Center for Dementia Research) gave the NYU Department of Psychiatry Grand Rounds on October 31<sup>st</sup>. Her topic was “Exosomes to Access, Assess and Target Brain Plasticity: A Mitochondrial Mechanism of Epigenetic Function for the Treatment of Main Mental Illnesses”.



## American College of Neuropsychopharmacology

At the American College of Neuropsychopharmacology (ACNP) Annual Meeting held earlier this month in Phoenix, posters were presented by three NKI investigators:

**Naomi Gaggi** (Clinical Research) – “The Effects of Transcranial Photobiomodulation on Irradiated and Non-Irradiated Brain Regions in Major Depressive Disorder: Continuous versus Pulsed Delivery”

**Antigona Martinez** (Schizophrenia Research) – “Personalized High-Definition MR-Guided TDCS Improves Face Emotion Recognition in Schizophrenia”

**Catia Teixeira** (Emotional Brain Institute) – “Prefrontal Cortex Activity during Early-Life Modulates Cognitive Performance in Adulthood”



**Joshua Siegel** (Center for Biomedical Imaging & Neuromodulation) gave one of the brief talks at the 2024 NYU Psychiatry Research Day. His title was “Psilocybin desynchronizes the human brain”.



## Department of Psychiatry Research Rounds

The NYU Department of Psychiatry Research Rounds on November 1<sup>st</sup> were presented by **Christos Lisgaras** (Center for Dementia Research) on “A Novel Application of Electroencephalography in Psychiatry”.



**Christos** also chaired and presented at an Investigator’s Workshop at the recent American Epilepsy Society Annual Meeting in Los Angeles. The title of the session was “Alzheimer’s Disease and Epilepsy: Bridging Basic and Clinical Studies.”



## NKI PUBLICATIONS UPDATE

Below is a list of references that have been added to the NKI publications database since the previous update. The full database contains over 7,500 items dating back to 1995 and can be searched from the [myNKI website](#).

Almeida-Souza TH, Silva RS, Franco HS, Santos LM, Melo JEC, Oliveira E Silva AM, Menezes EC, Santos JRD, Teixeira-Silva F, Goes TC, Marchioro M. Involvement of the serotonergic, GABAergic and glutamatergic systems of the rostral anterior cingulate cortex in the trait and state anxiety of adult male Wistar rats. *Behav Brain Res*. 2025 Feb 4; 477:115298. PMID: 39433219.

Basavarajappa BS, Subbanna S. Unveiling the Potential of Phytocannabinoids: Exploring Marijuana's Lesser-Known Constituents for Neurological Disorders. *Biomolecules*. 2024 Oct 13;14(10):1296. PMID: 39456229.

Bergson Z, Ahmed AO, Bell J, Butler PD, Gordon J, Seitz AR, Silverstein SM, Thompson JL, Zemon V. Visual remediation of contrast processing impairments in schizophrenia: A preliminary clinical trial. *Schizophr Res*. 2024 Oct 30; 274:396-405. PMID: 39481234.

Bordbar A, Zia W, Birnbaum J, Omid J, Lee RF, Lev E et al. Magnetic resonance imaging of a stream of bubbles injected into liquid suspensions. *Chemical Engineering Journal* 2024; 494:153282.

Camerota M, Castellanos FX, Carter BS, Check J, Helderman J, Hofheimer JA, McGowan EC, Neal CR, Pastyrnak SL, Smith LM, O'Shea TM, Marsit CJ, Lester BM. Trajectories of attention problems in preschoolers born very preterm. *J Child Psychol Psychiatry*. 2024 Nov 10. PMID: 39523488.

Carucci S, Di Martino A, Castellanos FX, Masi G, Banaschewski T, Coghill D, Moreno C, Cortese S. Professor Alessandro Zuddas' Impact and Legacy: The Influential Networking and Human Connection Skills of a Passionate Scientist, Clinical Academic,

and Pioneer in Child and Adolescent Psychopharmacology. *J Child Adolesc Psychopharmacol*. 2024 Oct 15. PMID: 39403746.

Clelland JD, Hesson H, Ramiah K, Anderson J, Thengampallil A, Girgis RR, Clelland CL. The relationship between COMT, proline, and negative symptoms in clinical high risk and recent psychosis onset. *Transl Psychiatry*. 2024 Oct 2; 14(1):409. PMID: 39358340.

Davachi L, Murty VP. Introduction to the Special Focus: Remembering Sarah DuBrow. *J Cogn Neurosci*. 2024 Sep 27:1-3. PMID: 39348129.

Dos Santos TFO, Melo JEC, Santos HF, Souza JLS, Santos ER, de Oliveira MCS, Bispo JMM, Medeiros KAAL, Lins LCRF, Menezes EC, de Gois AM, Silva RH, Ribeiro AM, Dos Santos JR. Repeated balance exercise promotes cholinergic neuroprotection of the pedunculopontine nucleus in a progressive model of Parkinson's disease. *Physiol Behav*. 2024 Oct 28; 288:114722. PMID: 39490803.

Dura-Bernal S, Herrera B, Lupascu C, Marsh BM, Gandolfi D, Marasco A, Neymotin S, Romani A, Solinas S, Bazhenov M, Hay E, Migliore M, Reinmann M, Arkhipov A. Large-Scale Mechanistic Models of Brain Circuits with Biophysically and Morphologically Detailed Neurons. *J Neurosci*. 2024 Oct 2; 44(40):e1236242024. PMID: 39358017.

Edelman EJ, Frankforter T, Rojas-Perez OF, Ablondi K, Castro C, Corvino J, Garcia I, Gordon DM, Jaramillo Y, Johnson NL, Jordan A, Nich C, Paris M Jr, Pagano D, Weimer MB, Williams EC, Kiluk BD. Promoting Race and Ethnic Diversity in a Hospital-Based Randomized Clinical Trial to Address Untreated Alcohol Use Disorder: Initial Lessons Learned. *J Addict Med*. 2024 Nov 8. PMID: 39514895.

Fowler SL, Behr TS, Turkes E, O'Brien DP, Cauhy PM, Rawlinson I, Edmonds M, Foiani MS, Schaler A, Crowley G, Bez S, Ficulle E, Tsefou E, Fischer R, Geary B, Gaur P, Miller C, D'Acunzo P, Levy E, Duff KE, Ryskeldi-Falcon B. Tau filaments are tethered within brain extracellular vesicles in Alzheimer's disease. *Nat Neurosci*. 2024 Nov 21. PMID: 39572740.

Fox JK, Walls T, Thomas H, Marr J, Breux P, Masia Warner C. An online compassion-focused intervention for middle school students: the Inspiring Comfort program. *Emotional and Behavioural Difficulties* 2024.

Fujimoto A, Elorette C, Fujimoto SH, Fleysler L, Russ BE, Rudebeck PH. Ventrolateral prefrontal cortex in macaques guides decisions in different learning contexts. *bioRxiv [Preprint]*. 2024 Sep 19:2024.09.18.613767. PMID: 39345480.

Fuller PE, Collis VL, Sharma P, Burkett AM, Wang S, Brown KA, Weir N, Goulbourne CN, Nixon RA, Longden TA, Gould TD, Monteiro MJ. Pathophysiologic abnormalities in transgenic mice carrying the Alzheimer disease PSEN1  $\Delta$ 440 mutation. *Hum Mol Genet*. 2024 Nov 20; 33(23):2051-2070. PMID: 39323410.

Gaggi NL, Parincu Z, Siu K, Collins KA, Iosifescu DV. Modulating the Mitochondria for Mood Disorders: Emerging Evidence for Transcranial Photobiomodulation in Major Depressive Disorder. *Current Treatment Options in Psychiatry* 2024; 11:145-62.

Gamoran J, Xu Y, Buinewicz SAP, Liu J, Mowrey W, Goldentyer G, Gabbay V, Pimentel SS. An examination of depression severity and treatment adherence among racially and ethnically minoritized, low-income individuals during the COVID-19 transition to telehealth. *Psychiatry Res*. 2024 Oct 1; 342:116221. PMID: 39378538.

Hardikar S, McKeown B, Turnbull A, Xu T, Valk SL, Bernhardt BC, Margulies DS, Milham MP, Jefferies E, Leech R, Villringer A, Smallwood J. Personality traits vary in their association with brain activity across situations. *Commun Biol*. 2024 Nov 12;7(1):1498. PMID: 39533085.

Jabari S, Ghodousian A, Lashgari R, Saligheh Rad H, Ardekani BA. Log- Cholesky filtering of diffusion tensor fields: Impact on noise reduction. *Magn Reson Imaging*. 2024 Dec; 114:110245. PMID: 39368521.

Jain S, LaFrancois JJ, Gerencer K, Botterill JJ, Kennedy M, Criscuolo C, Scharfman HE. Increasing adult-born neurons protects mice from epilepsy. *Elife*. 2024 Oct 24; 12:RP90893. PMID: 39446467.

Jiang Y, Sachdeva K, Goulbourne CN, Berg MJ, Peddy J, Stavrides PH, Pensalfini A, Pawlik M, Whyte L, Balapal BS, Shivakumar S, Bleiwas C, Smiley JF, Mathews PM, Nixon RA. Increased neuronal expression of the early endosomal adaptor APPL1 leads to endosomal and synaptic dysfunction with cholinergic neurodegeneration. *bioRxiv [Preprint]*. 2024 Sep 20:2024.09.19.613736. PMID: 39345644.

Kiar G, Mumford JA, Xu T, Vogelstein JT, Glatard T, Milham MP. Why experimental variation in neuroimaging should be embraced. *Nat Commun*. 2024 Oct 31;15(1):9411. PMID: 39482294.

Krakowski M, Hoptman MJ, Czobor P. Dysfunctional activation of the default mode network in response inhibition in schizophrenia. *J Psychiatr Res*. 2024 Nov 6; 180:411-417. PMID: 39536502.

Kronman H, Singh A, Azam S, Guzman AS, Zelli D, Lau T et al. Multidimensional Effects of Stress on Neuronal Exosome Levels and Simultaneous Transcriptomic Profiles. *Biological Psychiatry Global Open Science* 2024;100401.

Lee S, Zhao Z, Alekseichuk I, Shirinpour S, Linn G, Schroeder CE, Falchier AY, Opitz A. Layer-specific dynamics of local field potentials in monkey V1 during electrical stimulation. *bioRxiv [Preprint]*. 2024 Oct 22:2024.10.19.619242. PMID: 39484447.

Lee S, Li G, Chihuri S, Yu Y, Chen Q. Using data fusion with multiple imputation to correct for misclassification in self-reported exposure: a case-control study of cannabis use and homicide victimization. *Inj Epidemiol*. 2024 Oct 23; 11(1):57. PMID: 39443967.

Mackey CA, Duecker K, Neymotin S, Dura-Bernal S, Haegens S, Barczak A, O'Connell MN, Jones SR, Ding M, Ghuman AS, Schroeder CE. Is there a ubiquitous spectrolaminar motif of local field potential power across primate neocortex? *bioRxiv* [Preprint]. 2024 Sep 24:2024.09.18.613490. PMID: 39345528.

Mackey CA, O'Connell MN, Hackett TA, Schroeder CE, Kajikawa Y. Laminar organization of visual responses in core and parabelt auditory cortex. *Cereb Cortex*. 2024 Sep 3;34(9):bhae373. PMID: 39300609.

Manso Jimeno M, Ravi KS, Fung M, Oyekunle D, Ogbole G, Vaughan JT Jr, Geethanath S. Automated detection of motion artifacts in brain MR images using deep learning. *NMR Biomed*. 2024 Oct 22:e5276. PMID: 39439086.

Mishra A, Tostaeva G, Nentwich M, Espinal E, Markowitz N, Winfield J, Freund E, Gherman S, Mehta AD, Bickel S. Motifs of human hippocampal and cortical high frequency oscillations structure processing and memory of naturalistic stimuli. *bioRxiv* [Preprint]. 2024 Oct 9:2024.10.08.617305. PMID: 39416218.

Nentwich M, Leszczynski M, Schroeder CE, Bickel S, Parra LC. Intrinsic dynamic shapes responses to external stimulation in the human brain. *bioRxiv* [Preprint]. 2024 Oct 18:2024.08.05.606665. PMID: 39463938.

Olawole W, Li G, Zhou Z, Wu Z, Chen Q. Impact of neighborhood-level COVID-19 mortality on the increase in drug overdose mortality in New York City during the COVID-19 pandemic. *Inj Epidemiol*. 2024 Nov 22; 11(1):65. PMID: 39578923.

Onyilofor C, Feng B, Zou J, Mizhquiri Barbecho J, Duran AT, Ye S, Garcia O, Singer J, Chen Q, Moise N. Assessing the Fidelity of Depression Screening Implementation in Coronary Heart Disease Patients: A Cross-Sectional Study. *J Am Heart Assoc*. 2024 Nov 5; 13(21):e035550. PMID: 39424376.

Peng X, Trambaiolli LR, Choi EY, Lehman JF, Linn G, Russ BE, Schroeder CE, Haber SN, Liu H. Cross-species striatal hubs: Linking anatomy to resting-state connectivity. *Neuroimage*. 2024 Nov 1; 301:120866. PMID: 39322095.

Pomara N, Imbimbo BP. Gantenerumab in Dominantly Inherited Alzheimer Disease. *JAMA Neurol*. 2024 Nov 11. PMID: 39527042.

Pomara N, Osorio R, Reichert Plaska C, Imbimbo BP. Microglia-mediated neuroimmune suppression in posttraumatic stress disorder. *Proc Natl Acad Sci U S A*. 2024 Nov 26; 121(48):e2417472121. PMID: 39536074.

Rahman S, Roussos P. The 3D Genome in Brain Development: An Exploration of Molecular Mechanisms and Experimental Methods. *Neurosci Insights*. 2024 Oct 29; 19:26331055241293455. PMID: 39494115.

Reyes-Portillo JA, Judd E, Martin G, Kalver A, Taveras L, Rette D et al. Increasing Engagement of College Students at Risk for Suicide in Online Intervention: A Qualitative Analysis. *Journal of Technology in Human Services* 2024; 42(2):104-33. PMID: 39494115.

Reyes-Portillo JA, Rette DN, Weeks C, Singh T, Mahmud F, Tineo P et al. Online mental health treatment use among college students at-risk for suicide. *Journal of Technology in Human Services* 2022; 40(4):339-56. PMID: 39494115.

Roske C, Nguyen TNB, Schwartz JJ, Erulker A, Nie K, Xie H, Kim-Schulze S, Ely BA, Tobe RH, Mowrey W, Gabbay V. Immunological correlates of suicidality among adolescents with internalizing symptoms. *Brain Behav Immun Health*. 2024 Sep 16; 41:100866. PMID: 39350953.

Ross JM, Hamm JP. An expanding repertoire of circuit mechanisms for visual prediction errors. *Trends Neurosci*. 2024 Nov 8. PMID: 39521640.

Roychowdhury T, McNutt SW, Pasala C, Nguyen HT, Thornton DT, Sharma S, Botticelli L, Digwal CS, Joshi S, Yang N, Panchal P, Chakrabarty S, Bay S, Markov V, Kwong C, Lisanti J, Chung SY, Ginsberg SD, Yan P, De Stanchina E, Corben A, Modi S, Alpaugh ML, Colombo G, Erdjument-Bromage H, Neubert TA, Chalkley RJ, Baker PR, Burlingame AL, Rodina A, Chiosis G, Chu F. Phosphorylation-driven epichaperome assembly is a regulator of cellular adaptability and proliferation. *Nat Commun.* 2024 Oct 16; 15(1):8912. PMID: 39414766.

Sershen H. Abel Lajtha: In Memoriam (1922–2024). *Neurochemical Research* 2024;49(8):1903-4.

Sershen H. Obituary—Abel Lajtha (1922–2024). *Journal of Neurochemistry* 2024;168(9):3325-7.

Sundqvist N, Podéus H, Sten S, Engström M, Dura-Bernal S, Cedersund G. A Model-Driven Meta-Analysis Supports the Emerging Consensus View that Inhibitory Neurons Dominate BOLD-fMRI Responses. *bioRxiv [Preprint]*. 2024 Oct 17:2024.10.15.618416. PMID: 39464088.

Tomparry A, Davachi L. Integration of overlapping sequences emerges with consolidation through medial prefrontal cortex neural ensembles and hippocampal- cortical connectivity. *Elife.* 2024 Nov 15; 13:e84359. PMID: 39545928.

Tu L, Nguyen TNB, Breland MM, Tural U, Iosifescu DV, Gabbay V et al. Longitudinal Associations of Adolescent Personality Traits with Clinical Symptom Development and Progression: A Preliminary Investigation. *Journal of the American Academy of Child & Adolescent Psychiatry* 63[10 Suppl.], S295. 2024. [Abstract]

Weerasekera A, Coelho DRA, Ratai EM, Collins KA, Puerto AMH, De Taboada L, Gersten MB, Clancy JA, Hoptman MJ, Irvin MK, Sparpana AM, Sullivan EF, Song X, Adib A, Cassano P, Iosifescu DV. Dose-dependent effects of transcranial photobiomodulation on brain temperature in patients with major depressive disorder: a spectroscopy study. *Lasers Med Sci.* 2024 Oct 7; 39(1):249. PMID: 39370461.

Weitzman ER; Opioid Vaccine Radcliffe Conference Meeting Group; Alegria M, Caplan A, Dowling D, Evans J, Fisher CE, Jordan A, Kossowsky J, Landau M, Larson H, Levy O, Levy S, Mnookin S, Reif S, Ross J, Sherman AC. Social complexity of a fentanyl vaccine to prevent opioid overdose conference proceedings: Radcliffe Institute for Advanced Study conference proceedings. *Vaccine.* 2024 Sep 23:126324. PMID: 39317618.

Williams SZ, Zou J, Liu Y, Si Y, Galea S, Chen Q. Improving Survey Inference Using Administrative Records Without Releasing Individual-Level Continuous Data. *Stat Med.* 2024 Nov 18. PMID: 39557420.

Wrobel AL, Turner M, Dean OM, Berk M, Sylvia LG, Thase ME, Deckersbach T, Tohen M, McInnis MG, Kocsis JH, Shelton RC, Ostacher MJ, Iosifescu DV, McElroy SL, Turner A, Nierenberg AA. Understanding the relationship between childhood abuse and affective symptoms in bipolar disorder: New insights from a network analysis. *Psychiatry Res.* 2024 Sep 16; 342:116197. PMID: 39317000.

Yu W, Zadbood A, Chanales AJH, Davachi L. Repetition dynamically and rapidly increases cortical, but not hippocampal, offline reactivation. *Proc Natl Acad Sci U S A.* 2024 Oct; 121(40):e2405929121. PMID: 39316058.

Zhao K, Xie H, Jacobs T, Gaggi NL, Fortea J, Carlisle NB, Fonzo GA, Pohl KM, Osorio RS, Zhang Y. Elucidating the neuropathological and molecular heterogeneity of amyloid-beta and tau in Alzheimer's disease through machine learning and transcriptomic integration. *bioRxiv [Preprint]*. 2024 Oct 18:2024.10.16.618708. PMID: 39463964.

Zhu B, Park JM, Coffey SR, Russo A, Hsu IU, Wang J, Su C, Chang R, Lam TT, Gopal PP, Ginsberg SD, Zhao H, Hafner DA, Chandra SS, Zhang L. Single-cell transcriptomic and proteomic analysis of Parkinson's disease brains. *Sci Transl Med.* 2024 Oct 30; 16(771):eabo1997. PMID: 39475571.

**Neurophysiologic Biomarkers in  
Neuropsychiatric Disorders:  
Etiologic and Treatment Considerations**

Hoptman MJ, Girgis RR, Javitt DC. Biomarkers for Cognitive Control, Response Inhibition, Aggressivity, Impulsivity, and Violence. *Adv Neurobiol.* 2024; 40:725-756. PMID: 39562462.

Javitt DC. Mismatch Negativity (MMN) as a Pharmacodynamic/Response Biomarker for NMDA Receptor and Excitatory/Inhibitory Imbalance-Targeted Treatments in Schizophrenia. *Adv Neurobiol.* 2024; 40:411-451. PMID: 39562453.

Kantrowitz JT, Javitt DC. The Less Things Change, the More They Remain the Same: Impaired Neural Plasticity as a Critical Target for Drug Development in Neuropsychiatry. *Adv Neurobiol.* 2024; 40:801-828. PMID: 39562464.

Martínez A, Hillyard SA, Javitt DC. Visual Neurophysiological Biomarkers for Patient Stratification and Treatment Development Across Neuropsychiatric Disorders. *Adv Neurobiol.* 2024; 40:757-799. PMID: 39562463.

O'Connell MN, Barczak A. Auditory Biomarkers of Neuropsychiatric Disorders in Nonhuman Primates. *Adv Neurobiol.* 2024; 40:219-234. PMID: 39562447.

Park S, Thomson P, Kiar G, Castellanos FX, Milham MP, Bernhardt B, Di Martino A. Delineating a Pathway for the Discovery of Functional Connectome Biomarkers of Autism. *Adv Neurobiol.* 2024; 40:511-544. PMID: 39562456.

Sehatpour P, Javitt DC. Advanced Methodology for Neurophysiological Analysis and Biomarker Development: Time-Frequency and Source-Localization Approaches. *Adv Neurobiol.* 2024; 40:119-141. PMID: 39562443.