

# The NKInformer



*A newsletter of the Nathan S. Kline Institute for Psychiatric Research*

---

Donald C. Goff, MD, Director  
Antonio Convit, MD, Deputy Director  
Thomas O'Hara, MBA, Deputy Director, Institute Administration

---

March – April 2021

*Stuart Moss, MLS, Editor*

---



The Nathan Kline Institute wishes to recognize the skills, dedication, and service of the staff of the New York State Office of Mental Health (OMH) Clinical Diagnostic Laboratory at NKI. By celebrating Laboratory Week 2021 we can show them our gratitude for creating a successful, high quality laboratory serving the OMH community.

The NYS OMH operates 25 facilities throughout the State, serving over 700,000 individuals. It provides hope and recovery for adults with serious mental illness and children with serious emotional disturbances. The laboratory recently opened a new section providing molecular testing utilizing PCR. This new section will allow for the molecular diagnosis of various influenza viruses including Sars-Cov-2, CT/NG, HPC, and Flu/RSV. The lab hopes to expand its test menu even more in the future.

The technicians, technologists, doctors, and administrative staff of the NYS OMH clinical laboratory provide the nurses and doctors of NYS OMH facilities with the much-needed data they need for the proper care of their patients. We therefore thank the laboratory staff for their dedication and excellent work.



*Members of the Clinical Laboratory staff.*

The OMH Clinical Laboratory at NKI recently acquired new equipment (the [Hologic Panther System](#)) enabling the lab to do in-house molecular microbiology testing. Previously, these tests had to be outsourced to a reference laboratory, and the move to expand laboratory testing capabilities was the result of a cost-benefit analysis. The expanded microbiology services were implemented after examining the high costs associated with outsourcing these tests and assessing the lower costs and increased revenues that come with running the tests in-house. (Tests are reimbursed by Medicare according to the Clinical Laboratory Fee Schedule.) Processing these tests in-house also substantially improves turnaround time. The new Molecular/Microbiology lab services are estimated to cut those costs by over 35% per year.



*Clinical Laboratory Director Dr. Timothy Hilbert and Laboratory Manager Shereen Kamel, MS celebrate the recent lab improvements.*

The COVID-19 pandemic has placed more demand on clinical laboratory specimen testing than ever before. For a bit of context, see "[‘Nobody Sees Us’: Testing-Lab Workers Strain Under Demand](#)" from *The New York Times*.



*Deputy Director Tom O'Hara and Shereen Kamel at the ribbon cutting for the new Panther system.*

*Clinical Laboratory news contributed by Shereen Kamel, Harvey Lichtblau, and Elizabeth Muenzer*

## KUDOS



**Eunju Im** from the Nixon Lab (Dementia Research) has been awarded a prestigious research fellowship award by the New York Korean Biologists Society. The prize/fellowship includes \$500 cash and a presentation opportunity. Dr. Im will present this month at the 13<sup>th</sup> annual NYKB conference.

## PUBLICATIONS OF NOTE



**Daniel Javitt** (Schizophrenia Research) and colleagues from NKI, Columbia, and elsewhere published this new paper in *Brain*.

Patel GH, Arkin SC, Ruiz-Betancourt D, Plaza FI, Mirza SA, Vieira DJ, Strauss NE, Klim CC, Sanchez-Peña JP, Bartel LP, Grinband J, Martinez A, Berman RA, Ochsner KN, Leopold DA, Javitt DC. [Failure to engage the temporoparietal junction/posterior superior temporal sulcus predicts impaired naturalistic social cognition in schizophrenia.](#) *Brain*. 2021 Mar 12. PMID: 33710282.



**Dan Iosifescu** (Clinical Research) cowrote the ASCP Corner article, on antidepressant use in bipolar disorder, in the latest issue of the *Journal of Clinical Psychiatry*.

Goldberg JF, Nierenberg AA, Iosifescu DV. [Wrestling with Antidepressant Use in Bipolar Disorder: The Ongoing Debate.](#) *J Clin Psychiatry*. 2021 Jan 19; 82(1):19ac13181. PMID: 33471445.



**Xavier Castellanos** (Clinical Research) is the senior author of this publication in the open access journal *Molecular Autism*.

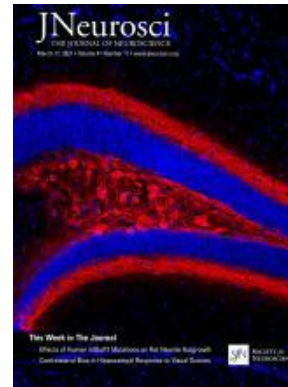
Aran A, Harel M, Cassuto H, Polyansky L, Schnapp A, Wattad N, Shmueli D, Golan D, Castellanos FX. [Cannabinoid treatment for autism: a proof-of-concept randomized trial.](#) *Mol Autism*. 2021 Feb 3;12(1):6. PMID: 33536055.



NKI authors have two papers in the *Journal of Neuroscience* this month. **Edênia Menezes, Cátia Teixeira** (Emotional Brain Institute) and NKI colleagues published research on the effects of perinatal fluoxetine exposure in mice.

Menezes E, Shah R, Laughlin L, Vinod KY, Smiley JF, Cunha C, Balla A, Sershen H, Castellanos FX, Corvelo A, Teixeira CM. [Reduced motivation in perinatal fluoxetine treated mice: a hypodopaminergic phenotype.](#) *J Neurosci*. 2021 Feb 3. PMID: 33536200.

The second paper is by **Justin Botterill, Helen Scharfman** (Dementia Research) and NKI colleagues. An image from this article was selected for the [March 17 cover](#).



Botterill JJ, Vinod KY, Gerencer KJ, Teixeira CM, LaFrancois JJ, Scharfman HE. [Bidirectional Regulation of Cognitive and Anxiety-like Behaviors by Dentate Gyrus Mossy Cells in Male and Female Mice.](#) *J Neurosci*. 2021 Mar 17; 41(11):2475-2495. PMID: 33472828.



This new open access article by **Victor Dyakin** and colleagues appears online in *Symmetry*.

Dyakin VV, Wisniewski TM, Lajtha A. [Racemization in Post-Translational Modifications Relevance to Protein Aging, Aggregation and Neurodegeneration: Tip of the Iceberg.](#) *Symmetry* 2021; 13(3):455.

# Science Advances

**Pasquale D'Acunzo, Efrat Levy** (Dementia Research) and numerous NKI colleagues have a new paper in the open access journal *Science Advances*.

D'Acunzo P, Pérez-González R, Kim Y, Hargash T, Miller C, Alldred MJ, Erdjument-Bromage H, Penikalapati SC, Pawlik M, Saito M, Saito M, Ginsberg SD, Neubert TA, Goulbourne CN, Levy E. [Mitovesicles are a novel population of extracellular vesicles of mitochondrial origin altered in Down syndrome](#). *Sci Adv*. 2021 Feb 12; 7(7):eabe5085. PMID: 33579698.



## SCIENTIFIC REPORTS

**Goi Khia Eng** (Clinical Research) is a lead author of this open access paper recently published in *Scientific Reports*.

Kashyap R, Eng GK, Bhattacharjee S, Gupta B, Ho R, Ho CSH, Zhang M, Mahendran R, Sim K, Chen SHA. [Individual-fMRI-approaches reveal cerebellum and visual communities to be functionally connected in obsessive compulsive disorder](#). *Sci Rep*. 2021 Jan 14; 11(1):1354. PMID: 33446780.



## PSYCHIATRIC ANNALS

**Crystal Lewis** (Social Solutions & Services) contributed this piece to *Psychiatric Annals* with an NYU colleague.

Drake C, Lewis CF. [Acting Against Racism in Departments of Psychiatry](#). *Psychiatric Annals* 2020; 50(11):499-504.

# JAMA Psychiatry

**Jean Pierre Lindenmayer** (Manhattan Psychiatric Center) coauthored this systematic review in *JAMA Psychiatry*. The article was the subject of a [Psychiatric News Alert](#).

Hagi K, Nosaka T, Dickinson D, Lindenmayer JP, Lee J, Friedman J, Boyer L, Han M, Abdul-Rashid NA, Correll CU. [Association Between Cardiovascular Risk Factors and Cognitive Impairment in People with Schizophrenia: A Systematic Review and Meta-analysis](#). *JAMA Psychiatry*. 2021 Mar 3. PMID: 33656533.



## Current Opinion in Psychiatry

**Dr. Lindenmayer** also coauthored this review of transcranial direct current stimulation (tDCS) for schizophrenia in *Current Opinion in Psychiatry*.

Lindenmayer JP, Fitapelli B. [Noninvasive direct current stimulation for schizophrenia: a review](#). *Curr Opin Psychiatry*. 2021 Jan 29. PMID: 33534422.



**Salvador Dura-Bernal** and **Sam Neymotin** (Biomedical Imaging & Neuromodulation) are coauthors of this new paper in *Journal of Neurophysiology*.

Kelley C, Dura-Bernal S, Neymotin SA, Antic SD, Carnevale NT, Migliore M, Lytton WW. [Effects of I<sub>h</sub> and TASK-like shunting current on dendritic impedance in layer 5 pyramidal-tract neurons](#). *J Neurophysiol*. 2021 Mar 10. PMID: 33689489.

The American Journal of  
**Psychiatry**

**Dan Iosifescu** (Clinical Research) is a coauthor of this evidence synthesis on ketamine treatment of depression published in the *American Journal of Psychiatry*.

McIntyre RS, Rosenblat JD, Nemeroff CB, Sanacora G, Murrugh JW, Berk M, Brietzke E, Dodd S, Gorwood P, Ho R, Iosifescu DV, Lopez Jaramillo C, Kasper S, Kratiuk K, Lee JG, Lee Y, Lui LMW, Mansur RB, Papakostas GI, Subramaniapillai M, Thase M, Vieta E, Young AH, Zarate CA Jr, Stahl S. [Synthesizing the Evidence for Ketamine and Esketamine in Treatment-Resistant Depression: An International Expert Opinion on the Available Evidence and Implementation](#). *Am J Psychiatry*. 2021 Mar 17. PMID: 33726522.

### INFO UPDATE


*Library services continue uninterrupted. As always, if you need documents, assistance with literature searching, or have reference questions, the [NKI librarian](#) is at your service.*



NKI employees are eligible to register with the New York State Library in order to access the Library's substantial [electronic resources](#). (Note that all New York residents can register, but NYS government employees have access to a lot more.) Instructions to register are [here](#):

<http://www.nysl.nysed.gov/apply.htm>

(If you need assistance verifying your agency employment while at home, the NKI librarian can do that for you.)

 U.S. National Library of Medicine

*ClinicalTrials.gov*

ClinicalTrials.gov, a resource maintained by the National Library of Medicine and containing information on tens of thousands of studies conducted around the world, is undergoing a [modernization effort](#). You can learn more about this project from the recent webinar that is archived [here](#).



[Health, United States](#) is an annual report on trends in health statistics from the National Center for Health Statistics. The 2019 edition is now available [here](#). Among the many useful features are the [Spotlight Infographics](#) and an [At-a-glance Table](#).



Don't get scammed! COVID-19 has led to a rise in fraud. Here are [five tips](#) to avoid falling prey.

The NKI librarian is always available to assist with literature searching, citation searching (Web of Science, Scopus), bibliographic reference management, and the like. When you have any information needs, or questions about available resources, don't hesitate to turn to us.

The library offers a comfortable, quiet space for reading, work, and small meetings. To use the library's Wi-Fi network, ask the library staff for the password.

You can [link to the NKI Library's website](#) from myNKI. The Library site includes quick links to the NYU Health Sciences Library and to the New York State Library, as well as links to NKI's own library resources ([journal finder](#), [online catalog](#), [PsychiatryOnline](#), etc.).

## DEPARTMENT OF WONDER



New York State recently launched [Excelsior Pass](#), a free and voluntary platform for businesses and individuals that can be used to easily demonstrate proof of vaccination or a recent negative COVID test. The Passes can be printed or stored using an app.

New York is the first state to release a vaccine “passport”, though others are likely to follow. Such passports raise a variety of [ethical questions](#) as well as [political ones](#).



The COVID pandemic has been with us for over a year now. But where does it go from here? The course of the pandemic depends on many variables, but here are a couple of interesting takes on what the future may hold. Some [“Models Predict a ‘Considerable Surge’ of COVID”](#) next winter. And in the longer term, one doctor predicts that we are likely to see COVID [“More Than Polio and Less Than Flu”](#).

### The Urgency Illusion

Do you ever feel like you are constantly dealing with “urgent” matters but somehow never getting to the really *important* things? If so, take a look at [“The Urgency Illusion: Are You Running Around with Your Hair on Fire? Here’s Why!”](#) from the [Leadership Freak](#) blog.

## EVENTS AND SEMINARS

### NKI All Career Trajectories (ACT) Series

The NKI All Career Trajectories (ACT) Series is scheduled to present its fourth speaker on Monday, May 10<sup>th</sup> at 12pm.

The goal of this series is to provide scientists at all career levels – from undergraduates to research technicians to post-doctoral fellows – information on alternative careers in science and how these scientists made their career choices. Throughout the series we will bring in (through zoom calls) scientists in various careers such as government, industry, library sciences, data analysis, and more, who will discuss their career paths and how they made important life and career choices.

The series takes place on the following zoom channel: <https://us02web.zoom.us/j/89540284886>

### CBC Community Space Discussions

The Community Building Committee (CBC) is launching periodic “Community Space” discussions. The goal is to build community and provide a forum for discussions about topics of interest. The first Community Space discussion will be held on Monday, April 26<sup>th</sup> at noon. The topic is Mentoring and Networking. There will be a brief presentation followed by a community discussion, moderated by the CBC. Please join us to talk about experiences of being mentored and being a mentee, what was helpful and what was not.

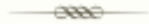
### Center for Cognitive Neurology Research Day

Save the date for the annual NYU Langone Center for Cognitive Neurology Research Day on Wednesday, May 26<sup>th</sup> from 1pm – 5pm. This year’s virtual Research Day Symposium will be focused on the “Underlying Mechanisms that Link Alzheimer’s Disease and Other Disorders”.

## Art of the Brain Exhibition

**The Art of the Brain** is a [virtual exhibition](#) of photographs, paintings, illustrations, and videos that celebrate the beauty of the brain as seen through the eyes of some of the world's leading researchers. With the aid of the latest technological advances, as symbolized by these images, scientists are better able to understand how the brain works and to accelerate the development of new treatments for many brain disorders including Alzheimer's disease, autism, drug addiction, schizophrenia, and Parkinson's disease.

This year's exhibition is presented by the Mount Sinai School of Medicine's Friedman Brain Institute and the Dana Foundation to mark Brain Awareness Week 2021. The online exhibition runs through May 28<sup>th</sup>.



## Statewide Grand Rounds

### ***Cops, Clinicians, or Both? Collaborative Approaches to Responding to Behavioral Health Emergencies***

*Presenters*

**Margie Balfour, MD, PhD**

Chief of Quality & Clinical Innovation at  
Connections Health Solutions

**Denise Balzer, LCSW**

Director of Crisis Services, Division of Adult  
Community Care, NYS OMH

**Jennifer Goldman, MD**

Medical Director, Crisis & Community Services,  
NYS OMH

Wednesday, April 21<sup>st</sup>, 1:00 – 2:30 pm

The archived recording of February's Grand Rounds program on ***COVID-19 and Schizophrenia-Spectrum Disorders: What We Learned & What We May Discover*** presented by **Katlyn Nemani, MD**, Clinical Research Psychiatrist at NKI, is now available for viewing at <https://omh.ny.gov/omhweb/bps/>.

The New York State Office of Mental Health (OMH) regularly hosts an interactive video broadcast covering the latest research, technology, and treatment implementation in the fields of psychiatry and psychology. These programs are recorded, and the archived Statewide Grand Rounds programs can be viewed [on the OMH website](#).

## NKI ON THE (VIRTUAL) ROAD



**Dr. Crystal Lewis**, Director of the Division of Social Solutions & Services at NKI and the Laurie M. Tisch Scholar for Racial Equity in Mental Health at NYU presented on "Racism as a Social Determinant of Health" as part of NYU's Health Equity Speaker Series. Video recordings of this speaker series can be found [here](#).

## NKI PUBLICATIONS UPDATE

Below is a list of references that have been added to the NKI publications database since the previous update. The full database contains over 6,500 items dating back to 1995, and can be searched from the [myNKI website](#).

Alcantara-Gonzalez D, Chartampila E, Criscuolo C, Scharfman HE. Early changes in synaptic and intrinsic properties of dentate gyrus granule cells in a mouse model of Alzheimer's disease neuropathology and atypical effects of the cholinergic antagonist atropine. *Neurobiol Dis*. 2021 May; 152:105274. PMID: 33484828.

Aran A, Harel M, Cassuto H, Polyansky L, Schnapp A, Wattad N, Shmueli D, Golan D, Castellanos FX. Cannabinoid treatment for autism: a proof-of-concept randomized trial. *Mol Autism*. 2021 Feb 3;12(1):6. PMID: 33536055.

Bittencourt AML, Bampi VF, Sommer RC, Schaker V, Juruena MFP, Soder RB, Franco AR, Sanvicente-Vieira B, Grassi-Oliveira R, Ferreira PEMS. Cortical thickness and subcortical volume abnormalities in male crack-cocaine users. *Psychiatry Res Neuroimaging*. 2020 Nov 23; 310:111232. PMID: 33621927.

Botterill JJ, Vinod KY, Gerencer KJ, Teixeira CM, LaFrancois JJ, Scharfman HE. Bidirectional Regulation of Cognitive and Anxiety-like Behaviors by Dentate Gyrus Mossy Cells in Male and Female Mice. *J Neurosci*. 2021 Mar 17;41(11):2475-2495. PMID: 33472828.

Botterill JJ, Gerencer KJ, Vinod KY, Alcantara-Gonzalez D, Scharfman HE. Dorsal and ventral mossy cells differ in their axonal projections throughout the dentate gyrus of the mouse hippocampus. *Hippocampus*. 2021 Feb 18. PMID: 33600026.

Callaghan B, Gasser C, Silvers JA, VanTieghem M, Choy T, O'Sullivan K, Tompary A, Davachi L, Tottenham N. Age-Related Increases in Posterior Hippocampal Granularity Are Associated with Remote Detailed Episodic Memory in Development. *J Neurosci*. 2021 Feb 24; 41(8):1738-1754. PMID: 33443075.

Costi S, Morris LS, Kirkwood KA, Hoch M, Corniquel M, Vo-Le B, Iqbal T, Chadha N, Pizzagalli DA, Whitton A, Bevilacqua L, Jha MK, Ursu S, Swann AC, Collins KA, Salas R, Bagiella E, Parides MK, Stern ER, Iosifescu DV, Han MH, Mathew SJ, Murrough JW. Impact of the KCNQ2/3 Channel Opener Ezogabine on Reward Circuit Activity and Clinical Symptoms in Depression: Results from a Randomized Controlled Trial. *Am J Psychiatry*. 2021 Mar 3. PMID: 33653118.

Czamara D, Tissink E, Tuhkanen J, Martins J, Awaloff Y, Drake AJ, Khulan B, Palotie A, Winter SM, Nemeroff CB, Craighead WE, Dunlop BW, Mayberg HS, Kinkead B, Mathew SJ, Iosifescu DV, Neylan TC, Heim CM, Lahti J, Eriksson JG, Rääkkönen K, Ressler KJ, Provençal N, Binder EB. Combined effects of genotype and childhood adversity shape variability of DNA methylation across age. *Transl Psychiatry*. 2021 Feb 1; 11(1):88. PMID: 33526782.

D'Acunzo P, Pérez-González R, Kim Y, Hargash T, Miller C, Alldred MJ, Erdjument-Bromage H, Penikalapati SC, Pawlik M, Saito M, Saito M, Ginsberg SD, Neubert TA, Goulbourne CN, Levy E. Mitovesicles are a novel population of extracellular vesicles of mitochondrial origin altered in Down syndrome. *Sci Adv*. 2021 Feb 12; 7(7):eabe5085. PMID: 33579698.

Di Rita A, Angelini DF, Maiorino T, Caputo V, Cascella R, Kumar M, Tiberti M, Lamborghini M, Wesch N, Löhr F, Dötsch V, Carinci M, D'Acunzo P, Chiurchiù V, Papaleo E, Rogov VV, Giardina E, Battistini L, Strappazon F. Characterization of a natural variant of human NDP52 and its functional consequences on mitophagy. *Cell Death Differ*. 2021 Mar 15. PMID: 33723372.



Dickerson F, Katsafanas E, Origoni A, Squire A, Khushalani S, Newman T, Rowe K, Stallings C, Savage CLG, Sweeney K, Nguyen TT, Breier A, Goff D, Ford G, Jones-Brando L, Yolken R. Exposure to Epstein Barr virus and cognitive functioning in individuals with schizophrenia. *Schizophr Res*. 2021 Jan 12; 228:193-197. PMID: 33450604.

Dima D, Modabbernia A, Papachristou E, Doucet GE, Agartz I, et al. Subcortical volumes across the lifespan: Data from 18,605 healthy individuals aged 3-90 years. *Hum Brain Mapp*. 2021 Feb 11. PMID: 33570244.

Drake C, Lewis CF. Acting Against Racism in Departments of Psychiatry. *Psychiatric Annals* 2020; 50(11):499-504.

Dyakin VV, Wisniewski TM, Lajtha A. Racemization in Post-Translational Modifications Relevance to Protein Aging, Aggregation and Neurodegeneration: Tip of the Iceberg. *Symmetry* 2021; 13(3):455.

Floris DL, Filho JOA, Lai MC, Giavasis S, Oldehinkel M, Mennes M, Charman T, Tillmann J, Dumas G, Ecker C, Dell'Acqua F, Banaschewski T, Moessnang C, Baron-Cohen S, Durston S, Loth E, Murphy DGM, Buitelaar JK, Beckmann CF, Milham MP, Di Martino A. Towards robust and replicable sex differences in the intrinsic brain function of autism. *Mol Autism*. 2021 Mar 1; 12(1):19. PMID: 33648569.

Frangou S, Modabbernia A, Williams SCR, Papachristou E, Doucet GE. Cortical thickness across the lifespan: Data from 17,075 healthy individuals aged 3-90 years. *Hum Brain Mapp*. 2021 Feb 17. PMID: 33595143.

Garza-Villarreal EA, Alcalá-Lozano R, Fernández-Lozano S, Morelos-Santana E, Dávalos A, Villicaña V, Alcauter S, Castellanos FX, González-Olvera JJ. Clinical and functional connectivity outcomes of 5-Hz repeated transcranial magnetic stimulation as an add-on treatment in cocaine use disorder: a double-blind randomized controlled trial. *Biol Psychiatry Cogn Neurosci Neuroimaging*. 2021 Jan 25. PMID: 33508499.

Gatta E, Saudagar V, Drnevich J, Forrest MP, Auta J, Clark LV, Sershen H, Smith RC, Grayson DR, Davis JM, Guidotti A. Concordance of Immune-Related Markers in Lymphocytes and Prefrontal Cortex in Schizophrenia. *Schizophr Bull Open*. 2021 Feb 6; 2(1):sgab002. PMID: 33585819.

Girardin JL, Seixas A, Ramos Cejudo J, Osorio RS, Avirappattu G, Reid M, Parthasarathy S. Contribution of pulmonary diseases to COVID-19 mortality in a diverse urban community of New York. *Chron Respir Dis*. 2021 Jan- Dec; 18:1479973120986806. PMID: 33550849.

Goldberg JF, Nierenberg AA, Iosifescu DV. Wrestling with Antidepressant Use in Bipolar Disorder: The Ongoing Debate. *J Clin Psychiatry*. 2021 Jan 19; 82(1):19ac13181. PMID: 33471445.

Gulcebi MI, Bartolini E, Lee O, Lisgaras CP, Onat F, Mifsud J, Striano P, Vezzani A, Hildebrand MS, Jimenez-Jimenez D, Junck L, Lewis-Smith D, Scheffer IE, Thijs RD, Zuberi SM, Blenkinsop S, Fowler HJ, Foley A; Epilepsy Climate Change Consortium, Sisodiya SM. Climate change and epilepsy: Insights from clinical and basic science studies. *Epilepsy Behav*. 2021 Mar; 116:107791. PMID: 33578223.

Hagi K, Nosaka T, Dickinson D, Lindenmayer JP, Lee J, Friedman J, Boyer L, Han M, Abdul-Rashid NA, Correll CU. Association Between Cardiovascular Risk Factors and Cognitive Impairment in People with Schizophrenia: A Systematic Review and Meta-analysis. *JAMA Psychiatry*. 2021 Mar 3. PMID: 33656533.

Hong SJ, Sisk LM, Caballero C, Mekhanik A, Roy AK, Milham MP, Gee DG. Decomposing complex links between the childhood environment and brain structure in school-aged youth. *Dev Cogn Neurosci*. 2021 Jan 22; 48:100919. PMID: 33556882.

Kashyap R, Eng GK, Bhattacharjee S, Gupta B, Ho R, Ho CSH, Zhang M, Mahendran R, Sim K, Chen SHA. Individual-fMRI approaches reveal cerebellum and visual communities to be functionally connected in obsessive compulsive disorder. *Sci Rep*. 2021 Jan 14; 11(1):1354. PMID: 33446780.

Kelley C, Dura-Bernal S, Neymotin SA, Antic SD, Carnevale NT, Migliore M, Lytton WW. Effects of  $I_h$  and TASK-like shunting current on dendritic impedance in layer 5 pyramidal-tract neurons. *J Neurophysiol*. 2021 Mar 10. PMID: 33689489.

Klionsky DJ, Abdel-Aziz AK, Abdelfatah S, Abdellatif M, Abdoli A, et al. Guidelines for the use and interpretation of assays for monitoring autophagy (4th edition). *Autophagy*. 2021 Feb 8: 1-382. PMID: 33634751.

Krakowski M, Tural U, Czobor P. The Importance of Conduct Disorder in the Treatment of Violence in Schizophrenia: Efficacy of Clozapine Compared with Olanzapine and Haloperidol. *Am J Psychiatry*. 2021 Mar 1; 178(3):266-274. PMID: 33472389.

Lindenmayer JP, Fitapelli B. Noninvasive direct current stimulation for schizophrenia: a review. *Curr Opin Psychiatry*. 2021 Jan 29. PMID: 33534422.

Li L, Su YA, Wu YK, Castellanos FX, Li K, Li JT, Si TM, Yan CG. Eight-week antidepressant treatment reduces functional connectivity in first-episode drug-naïve patients with major depressive disorder. *Hum Brain Mapp*. 2021 Feb 27. PMID: 33638263.

McIntyre RS, Rosenblat JD, Nemeroff CB, Sanacora G, Murrough JW, Berk M, Brietzke E, Dodd S, Gorwood P, Ho R, Iosifescu DV, Lopez Jaramillo C, Kasper S, Kratiuk K, Lee JG, Lee Y, Lui LMW, Mansur RB, Papakostas GI, Subramaniapillai M, Thase M, Vieta E, Young AH, Zarate CA Jr, Stahl S. Synthesizing the Evidence for Ketamine and Esketamine in Treatment-Resistant Depression: An International Expert Opinion on the Available Evidence and Implementation. *Am J Psychiatry*. 2021 Mar 17. PMID: 33726522.

Menezes E, Shah R, Laughlin L, Vinod KY, Smiley JF, Cunha C, Balla A, Sershen H, Castellanos FX, Corvelo A, Teixeira CM. Reduced motivation in perinatal fluoxetine treated mice: a hypodopaminergic phenotype. *J Neurosci*. 2021 Feb 3. PMID: 33536200.

Meyer L, Lakatos P, He Y. Language Dysfunction in Schizophrenia: Assessing Neural Tracking to Characterize the Underlying Disorder(s)? *Front Neurosci*. 2021 Feb 22; 15:640502. PMID: 33692672.

Moreno-Alcázar A, Ramos-Quiroga JA, Ribases M, Sánchez-Mora C, Palomar G, Bosch R, Salavert J, Fortea L, Monté-Rubio GC, Canales-Rodríguez EJ, Milham MP, Castellanos FX, Casas M, Pomarol-Clotet E, Radua J. Brain structural and functional substrates of ADGRL3 (latrophilin 3) haplotype in attention-deficit/hyperactivity disorder. *Sci Rep*. 2021 Jan 27; 11(1):2373. PMID: 33504901.

Nemani K, Li C, Olfson M, Blessing EM, Razavian N, Chen J, Petkova E, Goff DC. Association of Psychiatric Disorders with Mortality Among Patients with COVID-19. *JAMA Psychiatry*. 2021 Jan 27. PMID: 33502436.

Nemani K, Gurin L. Neuropsychiatric Complications after Stroke. *Semin Neurol*. 2021 Feb; 41(1):85-100. PMID: 33511605.

Oberlin LE, Respino M, Victoria L, Abreu L, Hoptman MJ, Alexopoulos GS, Gunning FM. Late-life depression accentuates cognitive weaknesses in older adults with small vessel disease. *Neuropsychopharmacology*. 2021 Feb 9. PMID: 33564103.

Patel GH, Arkin SC, Ruiz-Betancourt D, Plaza FI, Mirza SA, Vieira DJ, Strauss NE, Klim CC, Sanchez-Peña JP, Bartel LP, Grinband J, Martinez A, Berman RA, Ochsner KN, Leopold DA, Javitt DC. Failure to engage the temporoparietal junction/posterior superior temporal sulcus predicts impaired naturalistic social cognition in schizophrenia. *Brain*. 2021 Mar 12. PMID: 33710282.

Rette DN, Arnold MS, McDonald EM, Hoptman MJ, Collins KA, Iosifescu DV. Influences on childhood depressive symptoms: The effects of trauma and distress tolerance across age and sex groups. *J Affect Disord*. 2021 Mar 15; 283:373-376. PMID: 33578351.

Sehatpour P, Avissar M, Kantrowitz JT, Corcoran CM, De Baun HM, Patel GH, Girgis RR, Brucato G, Lopez-Calderon J, Silipo G, Dias E, Martinez A, Javitt DC. Deficits in Pre-attentive Processing of Spatial Location and Negative Symptoms in Subjects at Clinical High Risk for Schizophrenia. *Front Psychiatry*. 2021 Feb 2; 11:629144. PMID: 33603682.

Sui YV, Bertisch H, Lee HH, Storey P, Babb JS, Goff DC et al. Quantitative macromolecular proton fraction mapping reveals altered cortical myelin profile in schizophrenia spectrum disorders. *Cerebral Cortex Communications* 2021.

Van Lancker-Sidtis D, Kim Y, Ahn JS, Sidtis J. Do singing and talking arise from the same or different neurological systems? Dissociations of pitch, timing, and rhythm in two dysprosodic singers. *Psychomusicology: Music, Mind, and Brain* 2021; 31(1):18-34.

Yang SY. Listener's ratings and acoustic analyses of voice qualities associated with English and Korean sarcastic utterances. *Speech Communication* 2021; 129:1-6.

Zhang-James Y, Helminen EC, Liu J; ENIGMA-ADHD Working Group, Franke B, Hoogman M, Faraone SV. Evidence for similar structural brain anomalies in youth and adult attention-deficit/hyperactivity disorder: a machine learning analysis. *Transl Psychiatry*. 2021 Feb 1; 11(1):82. PMID: 33526765.

Zhou G, Olofsson JK, Koubeissi MZ, Menelaou G, Rosenow J, Schuele SU, Xu P, Voss JL, Lane G, Zelano C. Human hippocampal connectivity is stronger in olfaction than other sensory systems. *Prog Neurobiol*. 2021 Feb 25. PMID: 33640412.